

# INSTRUCTION

SHOWER ENCLOSURE - A713

# ISTRUZIONI PER MONTAGGIO, E MANUTENZIONE



page 1

Vi ringraziamo per aver scelto i nostri prodotti e ci auguriamo possiate essere soddisfatti. Leggete attentamente le istruzioni prima di procedere all'installazione.

## IMPORTANTE

Prima dell'installazione controllate che la doccia e tutte le sue parti siano integre e complete e che non presenti danni dovuti al trasporto, non si accettano eventuali reclami a riguardo dopo aver effettuato il montaggio. Seguite attentamente le seguenti istruzioni del manuale per montare ed utilizzare in modo la vostra doccia. Non attenersi alle istruzioni riportate in questo manuale può compromettere la garanzia.

!	E' consigliabile accompagnare bambini nell'utilizzo del box doccia.
!	Durante il trasporto fare attenzione e non rovesciare, colpire con materiali pesanti o scuotere violentemente.
!	non usare prodotti aggressivi, alcool, insetticidi ecc

- Prima di iniziare il montaggio e l'utilizzo del prodotto leggere attentamente tutto il manuale.
- Anche se queste istruzioni sono complete, noi raccomandiamo sempre che sia un installatore tecnicamente competente ad effettuare l'installazione.
- Indossare guanti e occhiali protettivi durante il montaggio.
- Accertarsi, prima dell'utilizzo della cabina doccia, che tutte le parti siano state correttamente montate e che il silicone sia stato utilizzato uniformemente e correttamente ed indicato dal manuale, per evitare danni a cose e persone e per prevenire fuoriuscite di acqua. Ricordatevi che prima di utilizzare la doccia per la prima volta bisogna attendere che il silicone sia ben asciugato (vedere indicazioni del produttore del sigillante utilizzato)

## ATTENZIONE

L'ignorare questo manuale di installazione o un non corretto montaggio può causare danni gravi a cose e persone.

## VIETATO

Salire in piedi sopra il prodotto imballato o eventuali sue parti.

## DEVE ESSERE FATTO

Dopo aver estratto i vetri dal cartone, questi devono essere trasportati da 2 persone e appoggiati con leggerezza ad un muro libero. Proteggere i bordi dei vetri utilizzando panni morbidi ed antiscivolo.

Una mancata osservazione di questo procedimento può portare alla rottura del vetro e a danni a cose e persone.

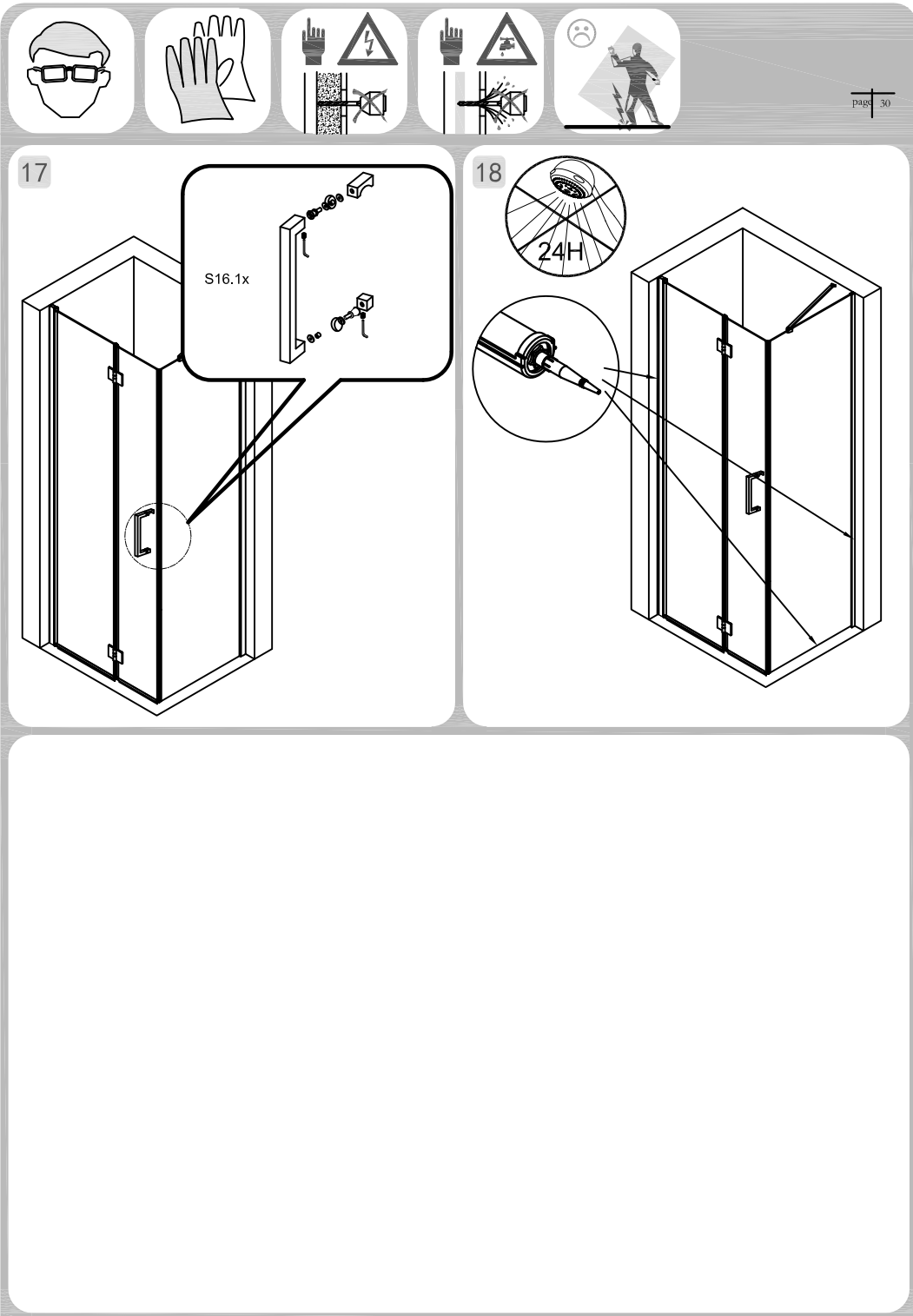
Il box doccia è conforme alle seguenti direttive comunitarie:

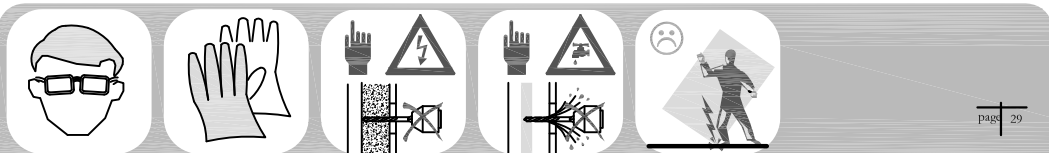
2011/305/EEC – Construction Products Regulation

Schio, 26/09/2014

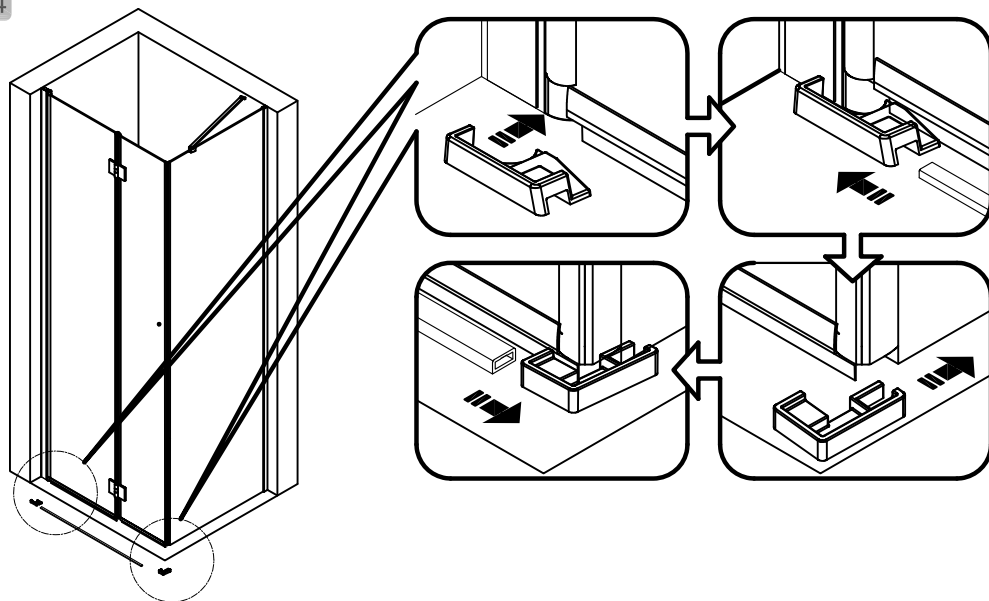
**VB ITALIA** s.r.l.  
Via Lago di Garda, 118 - 36015 Schio (VI)  
Tel. +39 0445 622011 - Fax +39 0445 622027  
E-mail: vb@vbitalia.com  
www.vbitalia.com

Prodotto distribuito da VB Italia s.r.l. via Lago di Garda 118, 36015 Schio (VI)

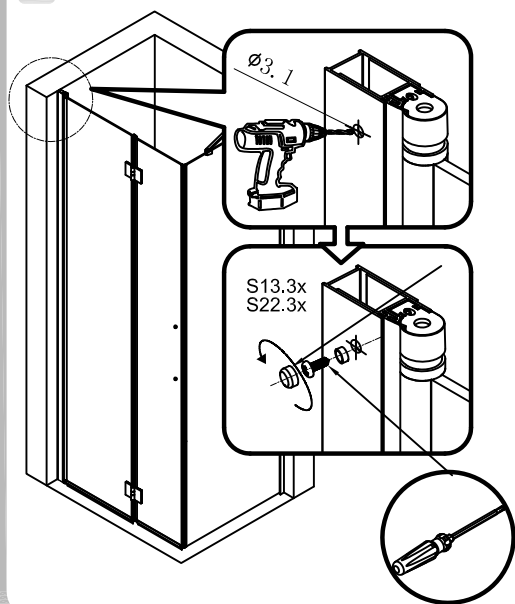




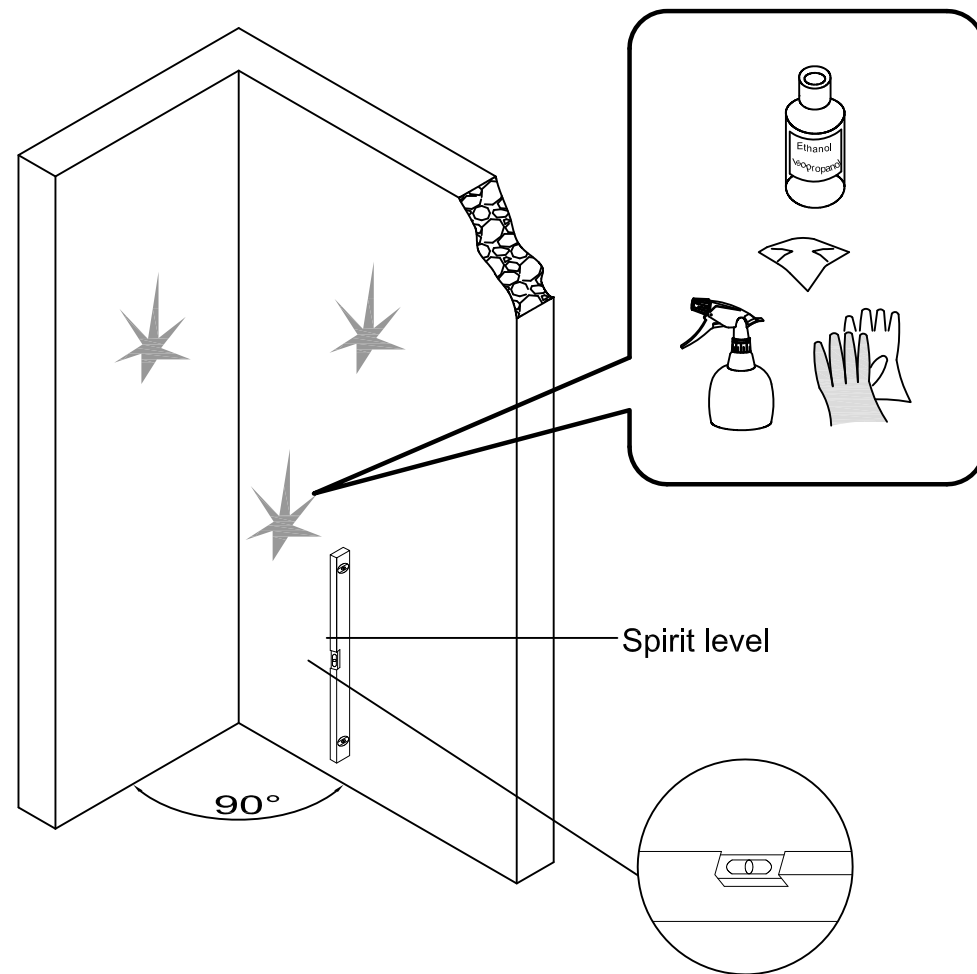
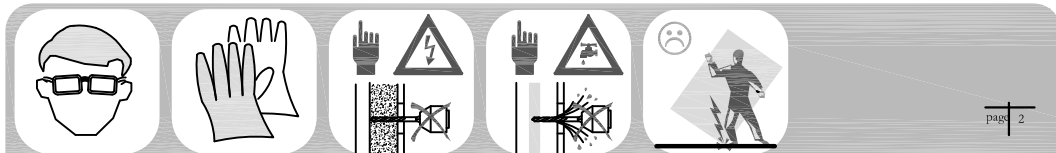
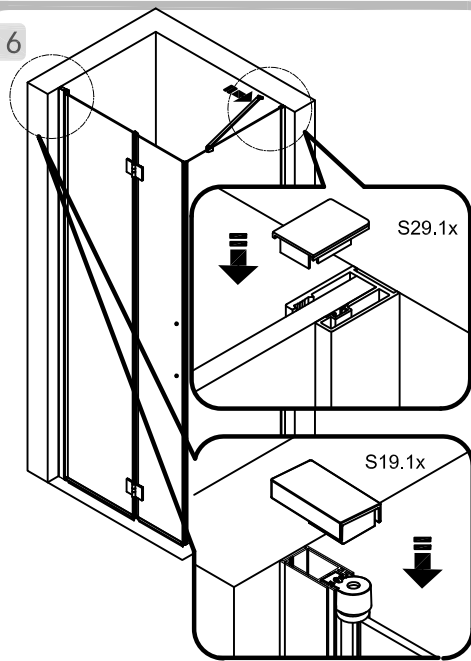
14

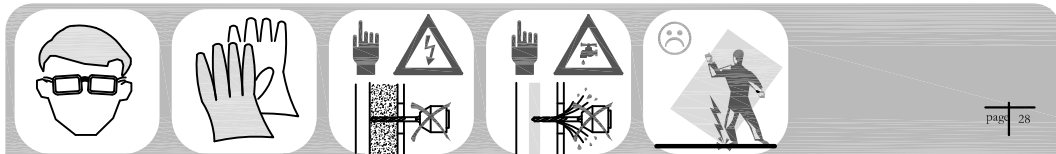
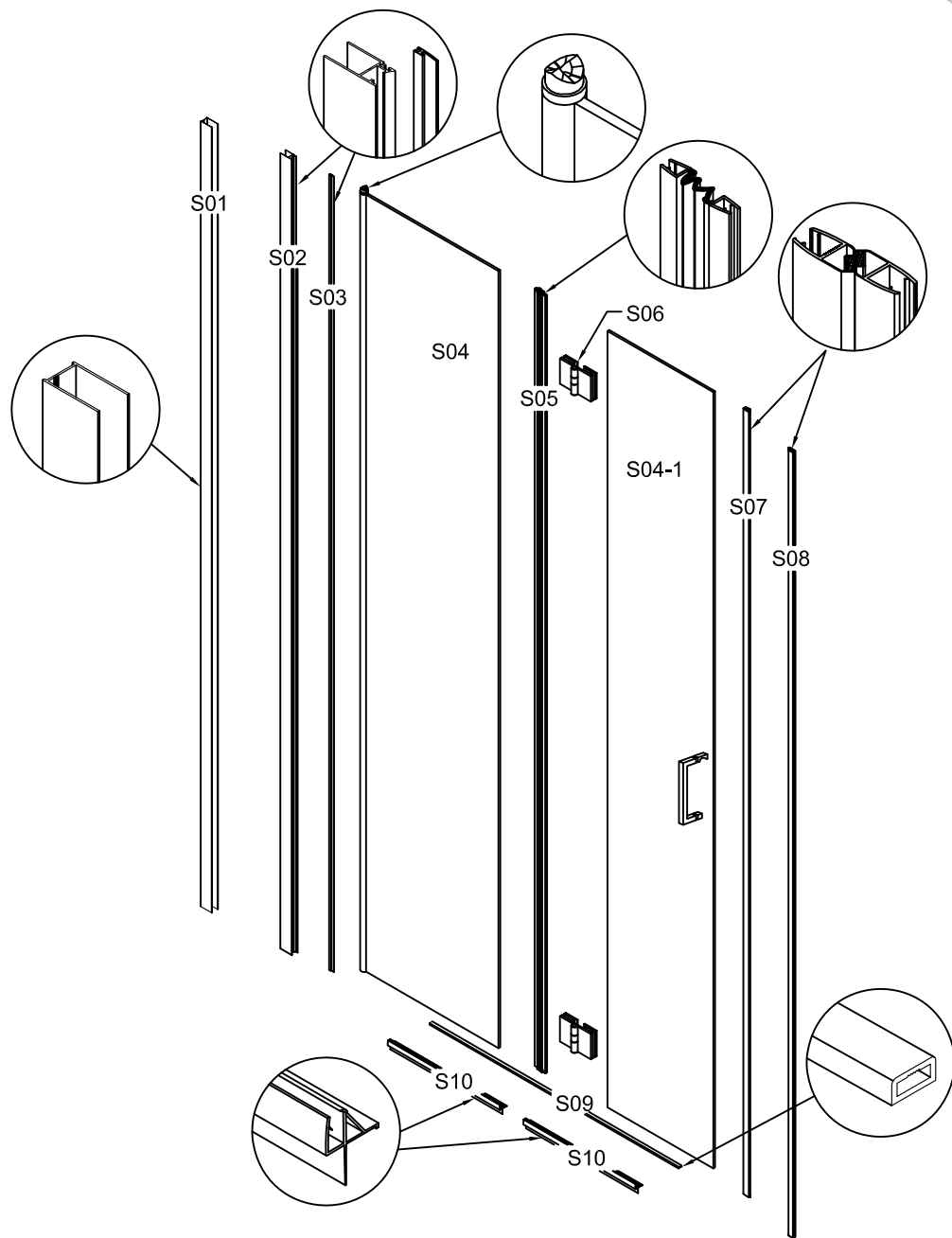
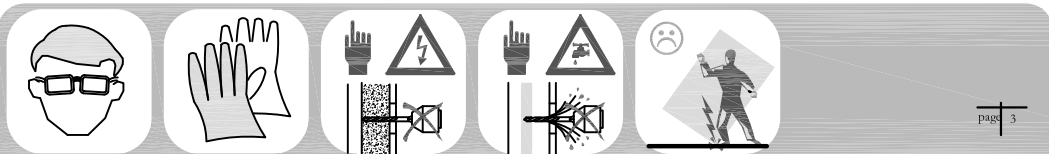


15

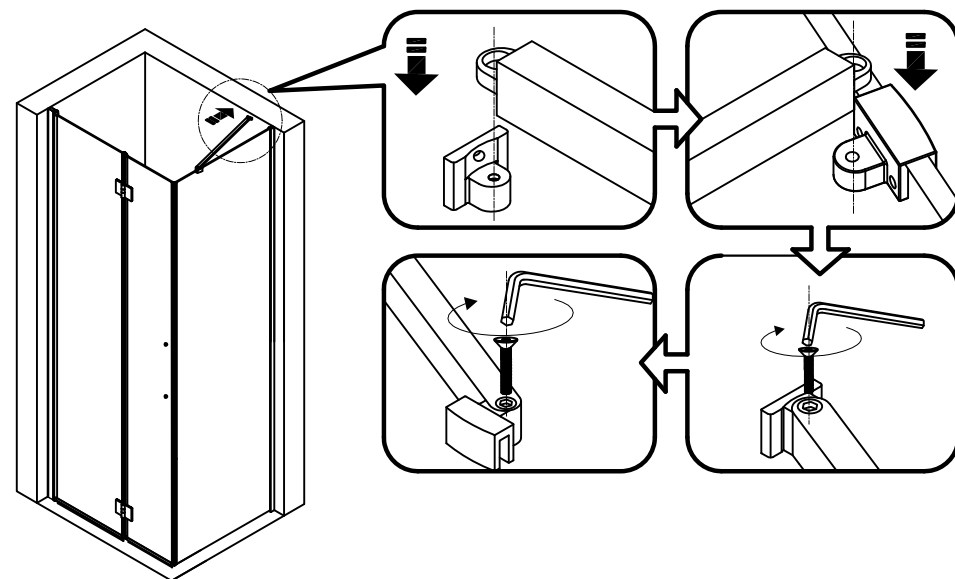


16

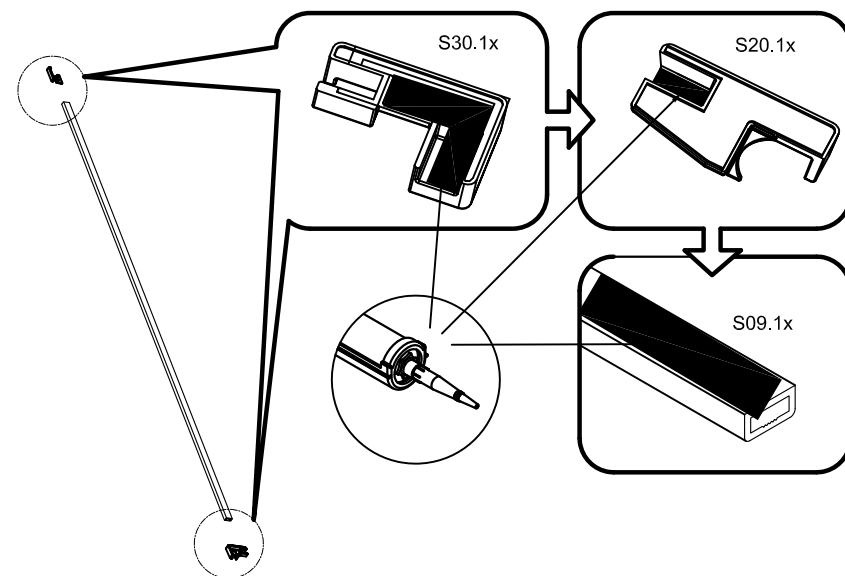


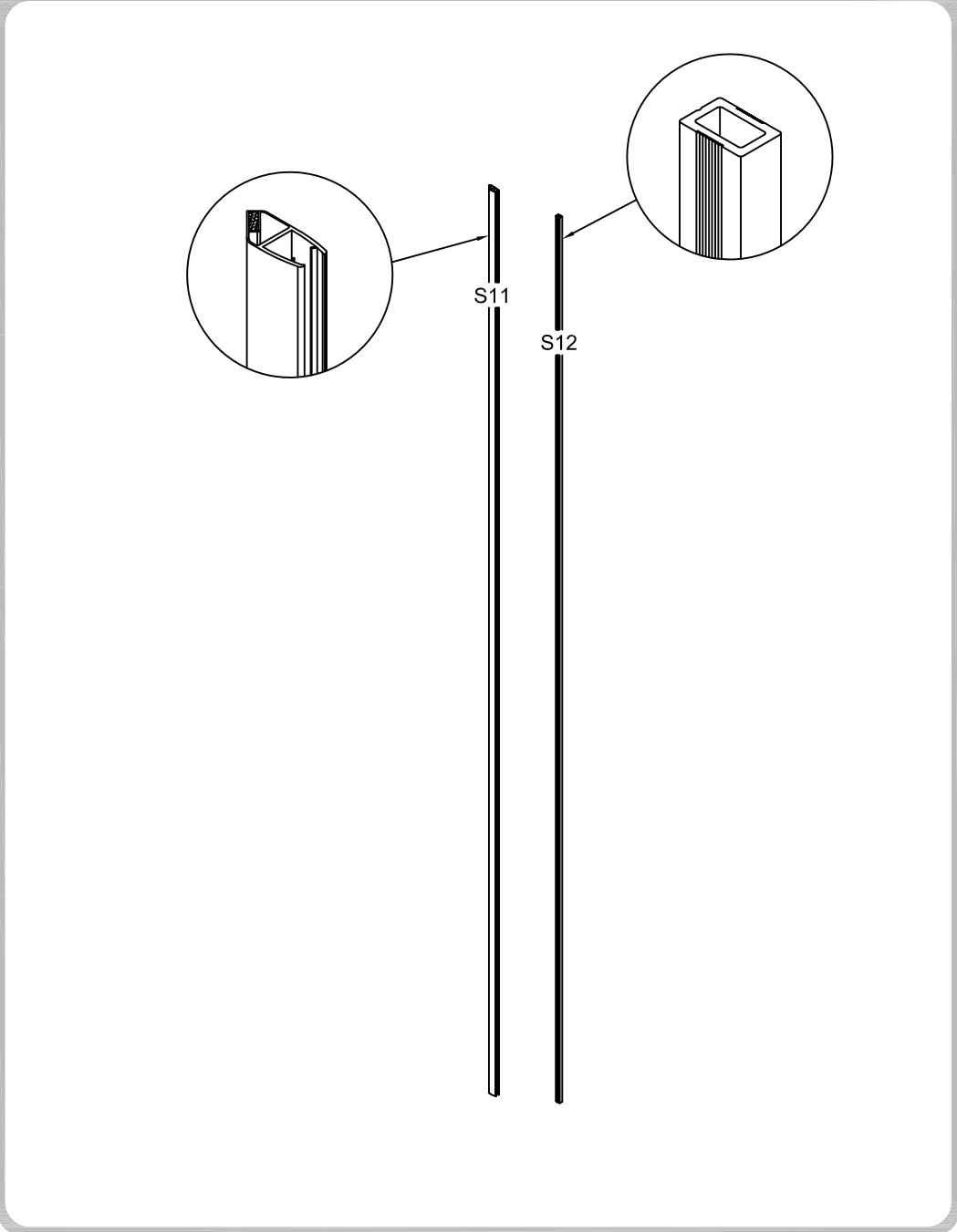
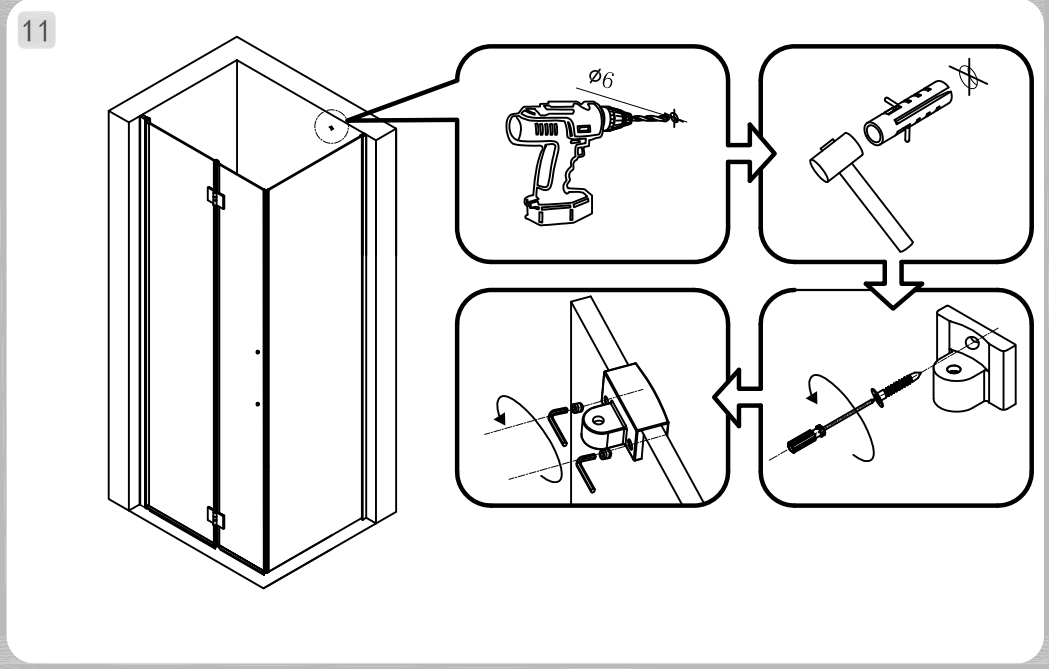
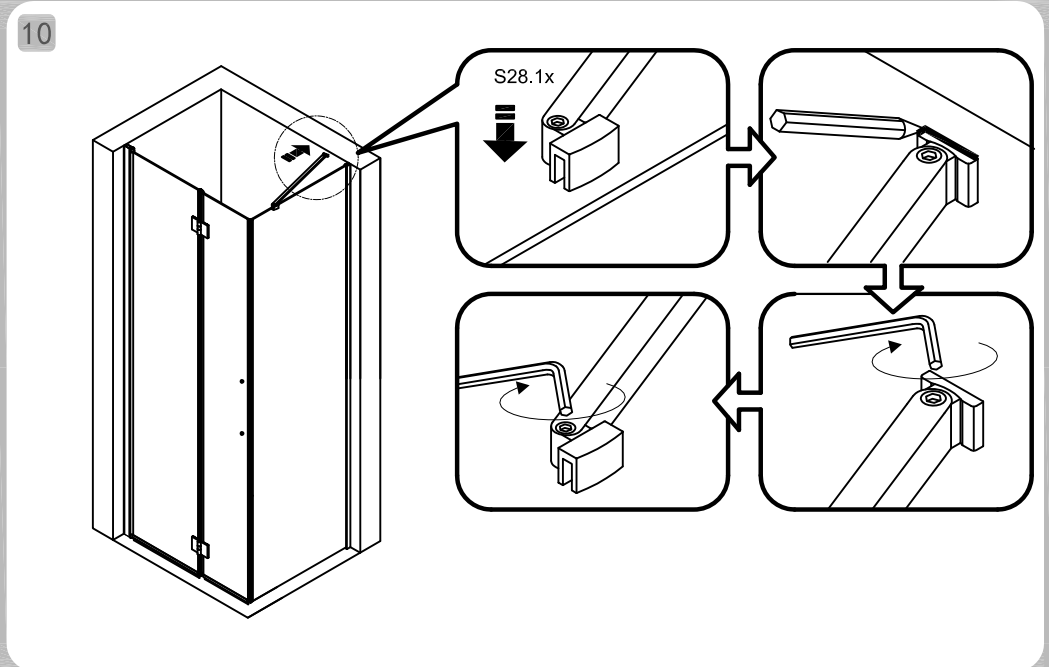


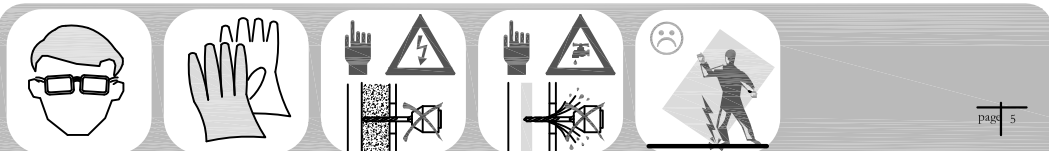
12



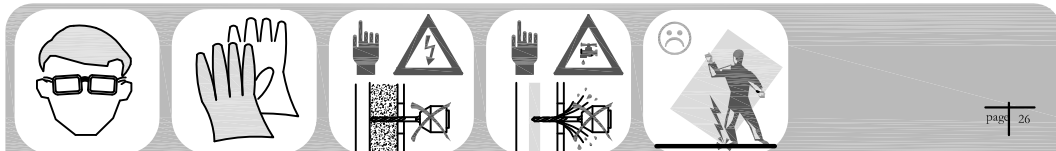
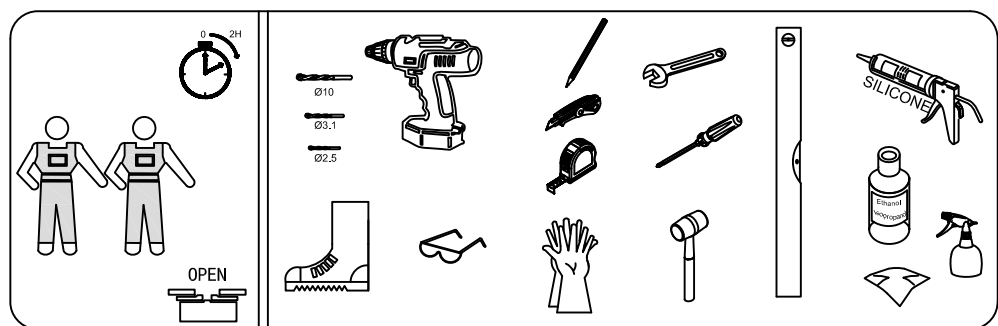
13



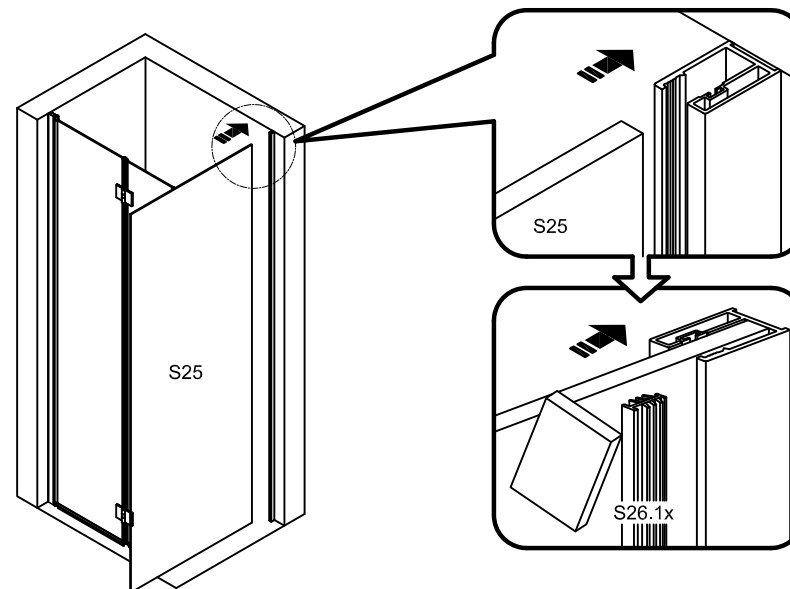




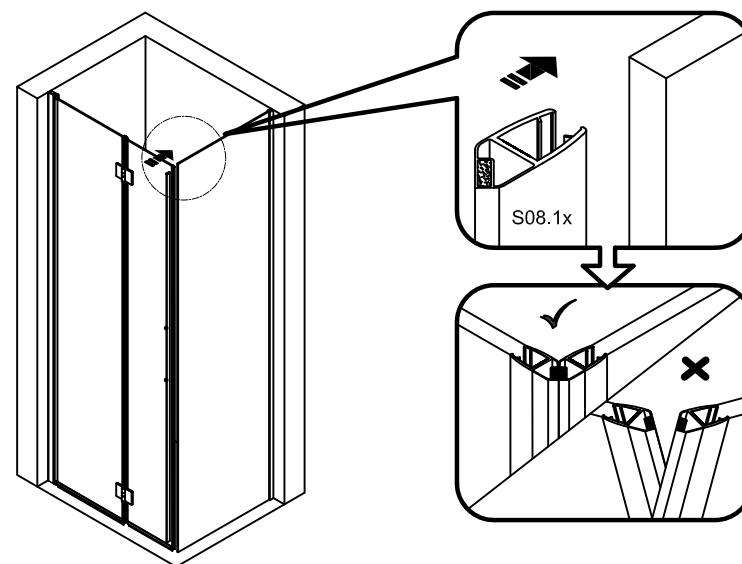
<b>S13</b>  3x	<b>S14</b>  4x	<b>S15</b>  4x	<b>S16</b>  1x	<b>S17</b>  1x
<b>S18</b>  1x 1x	<b>S19</b>  1x	<b>S20</b>  1x 1x	<b>S21</b>  1x	<b>S22</b>  3x
<b>S14</b>  4x	<b>S23</b>  4x	<b>S24</b>  1x		

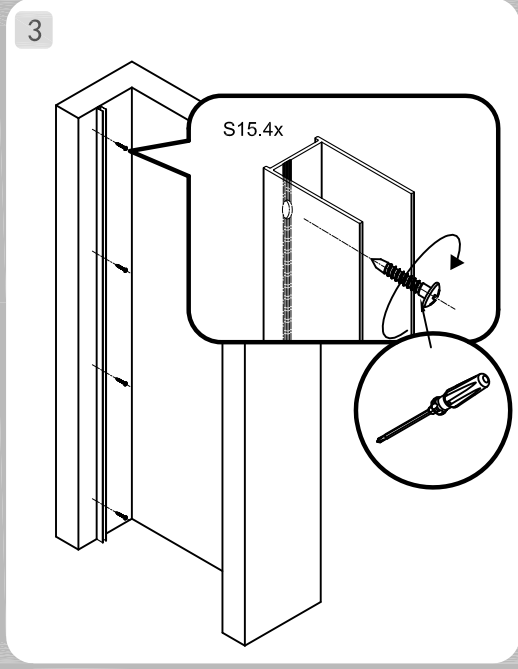
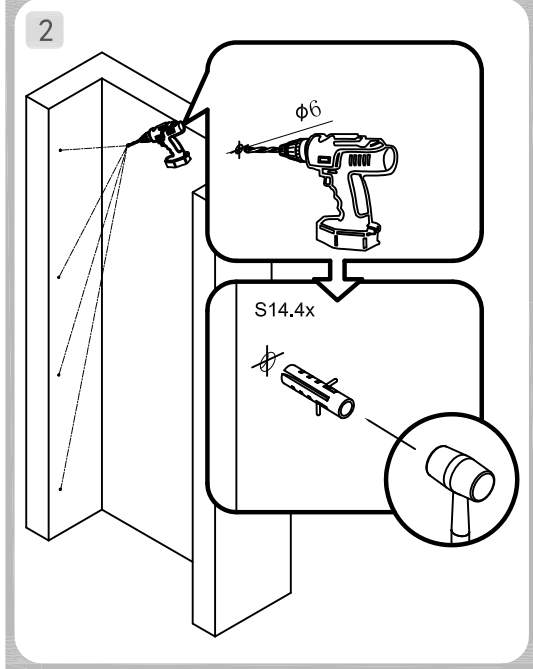
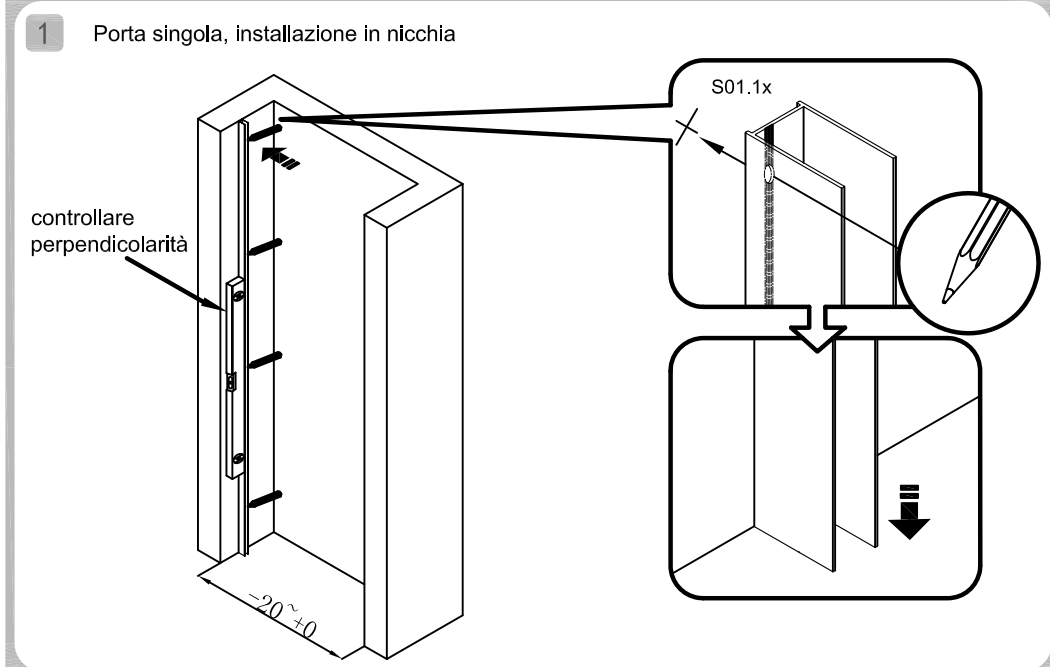
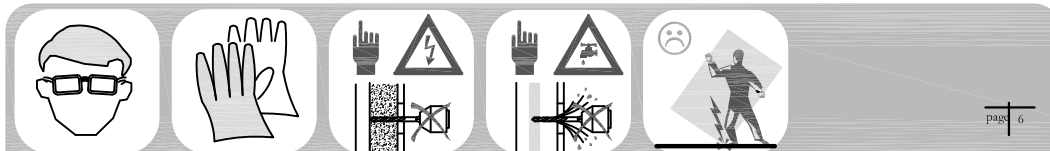
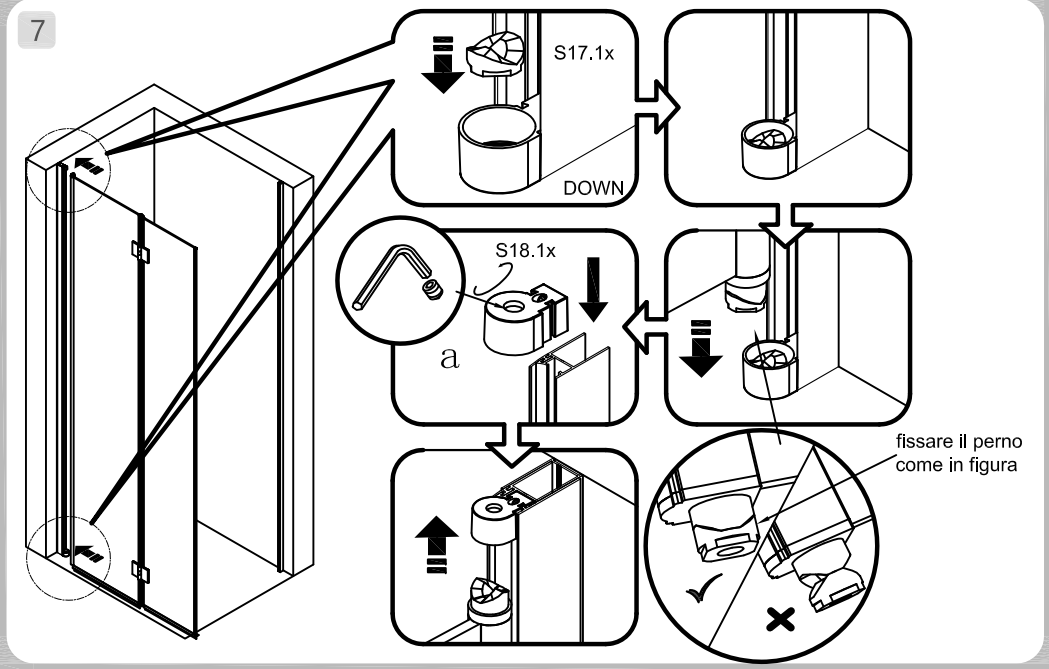
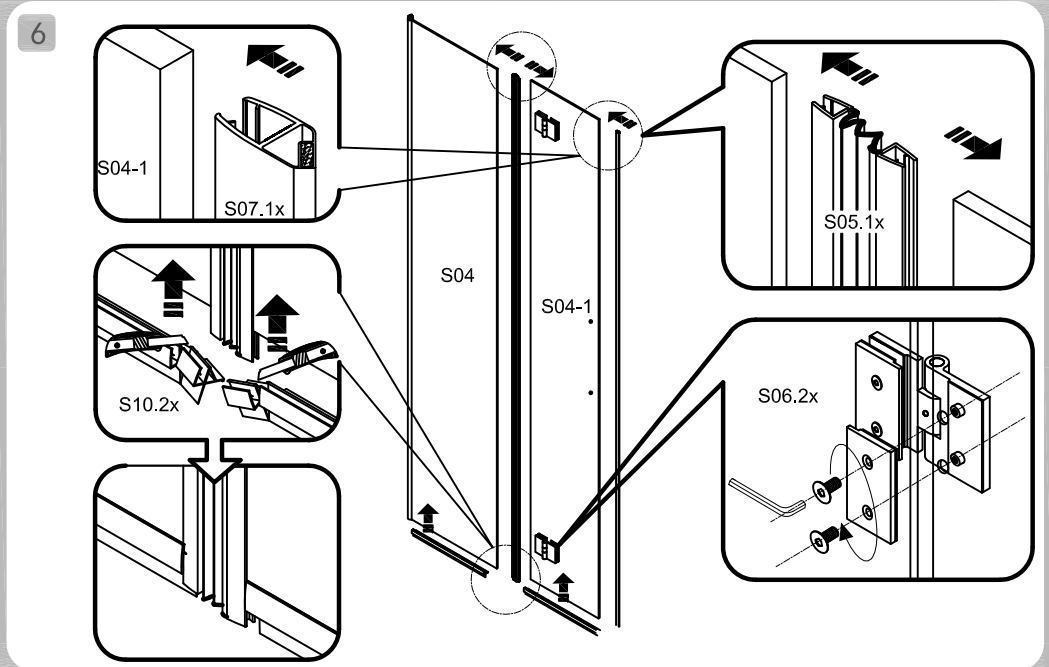
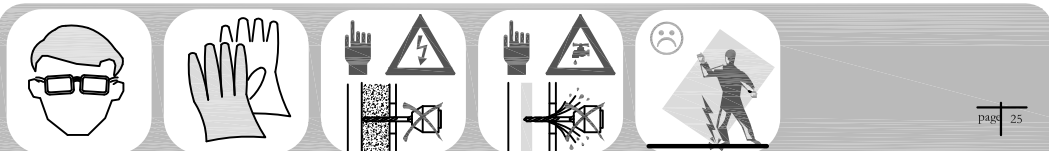


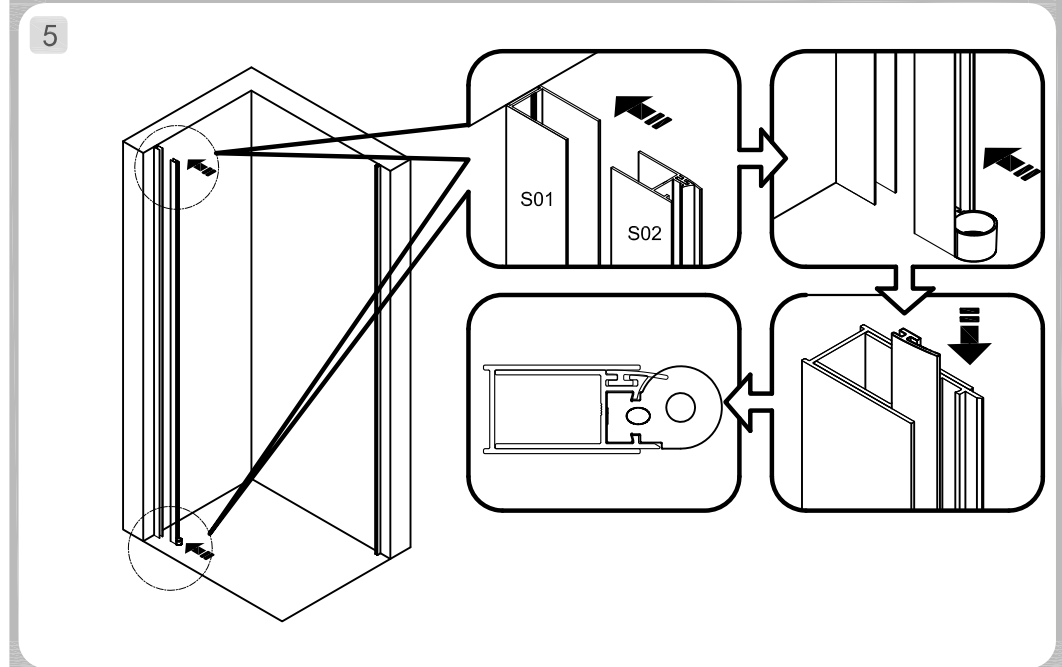
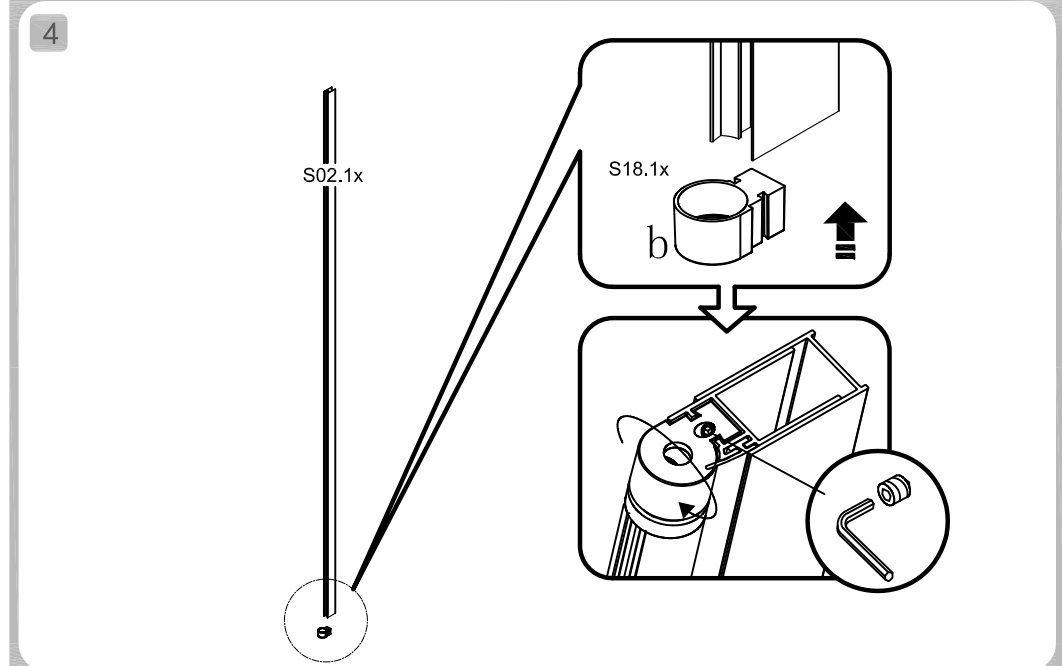
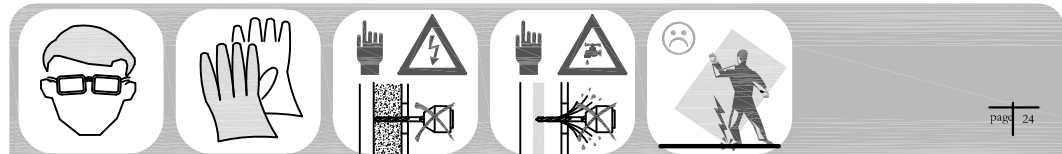
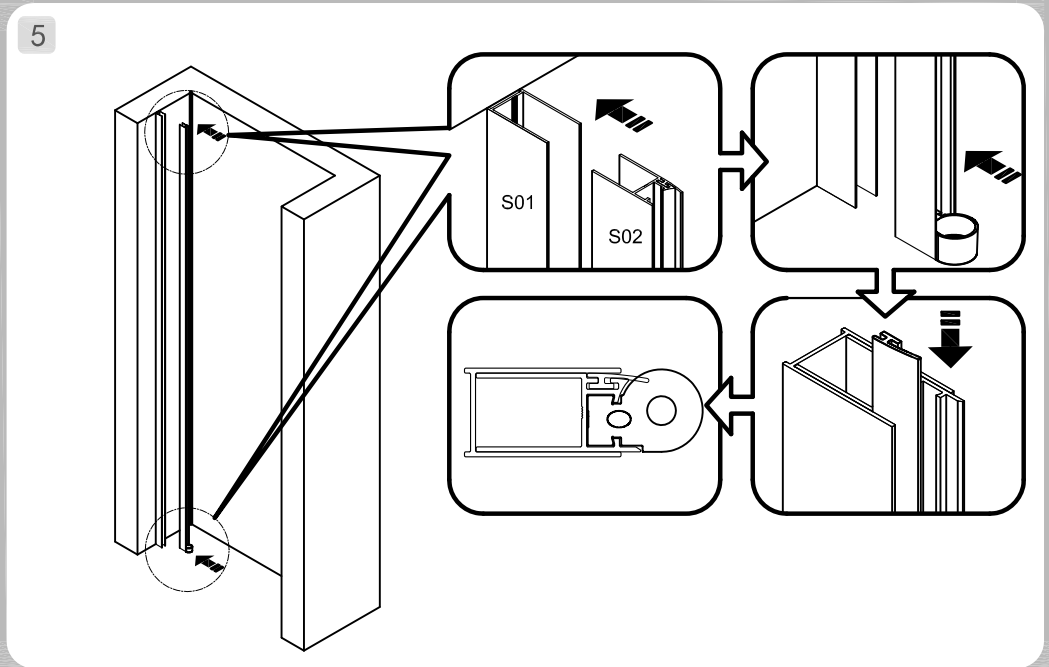
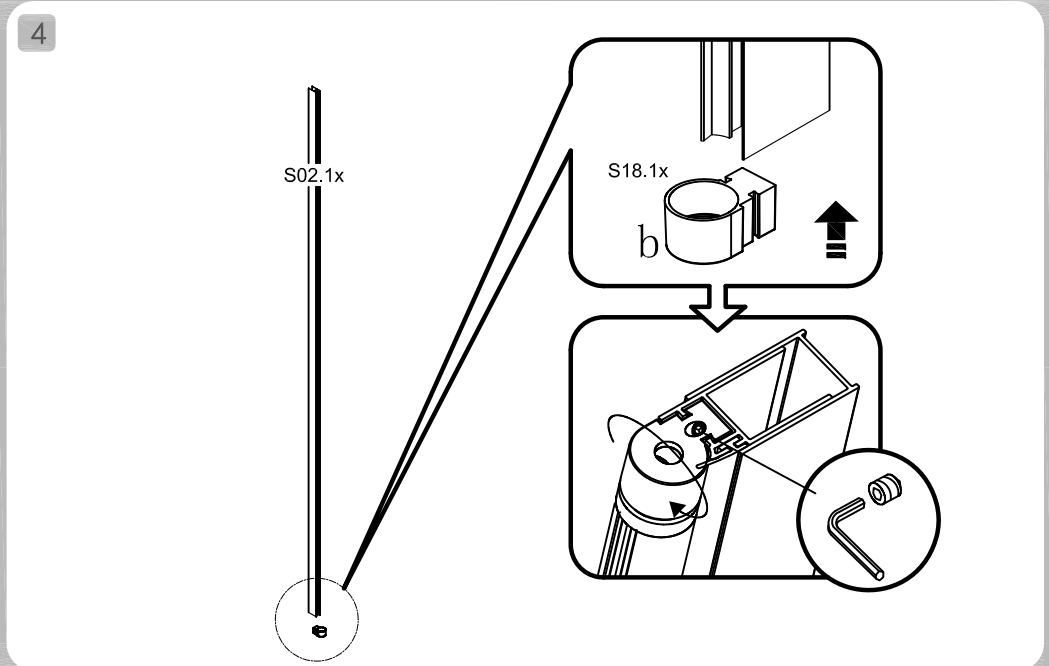
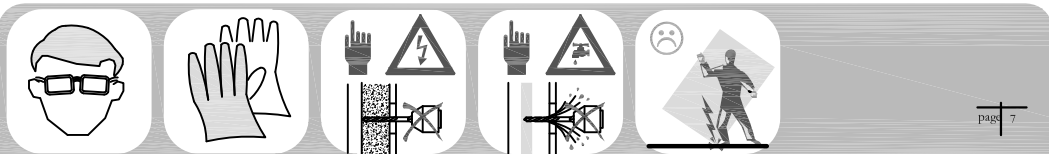
8



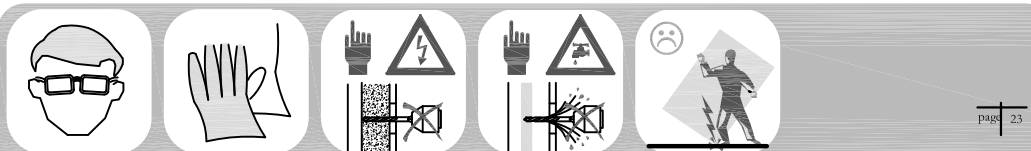
9



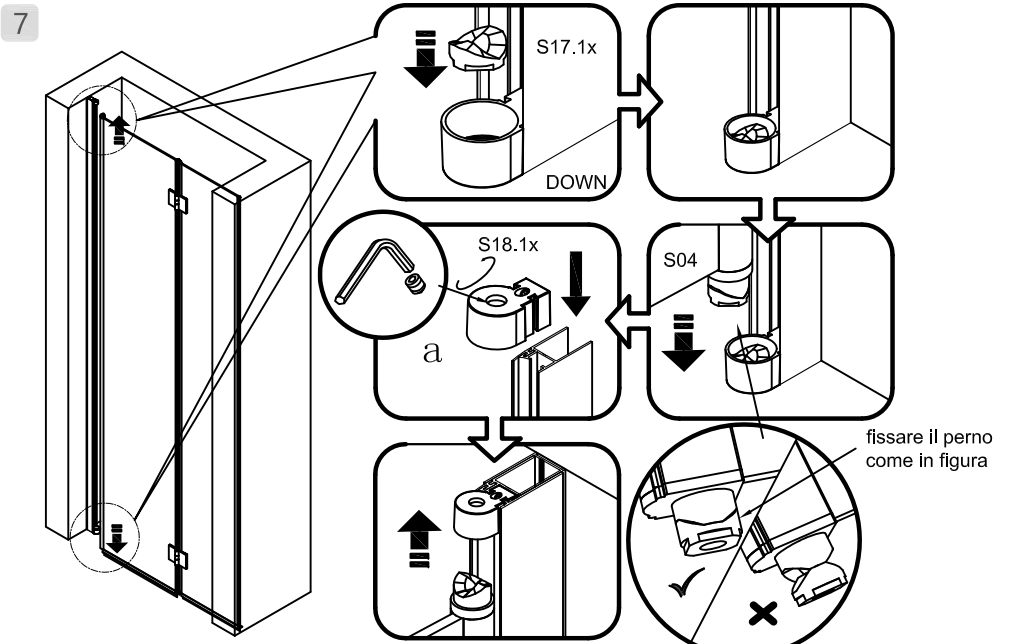
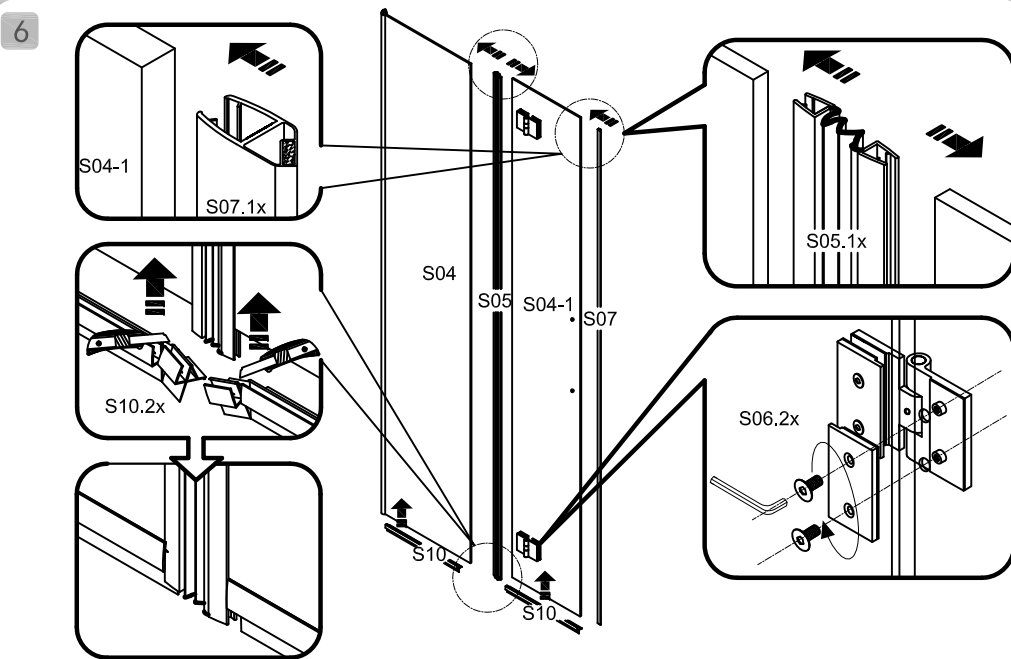
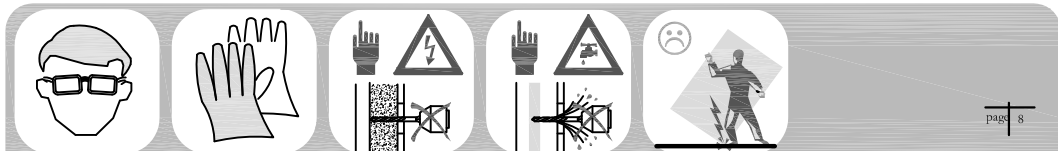
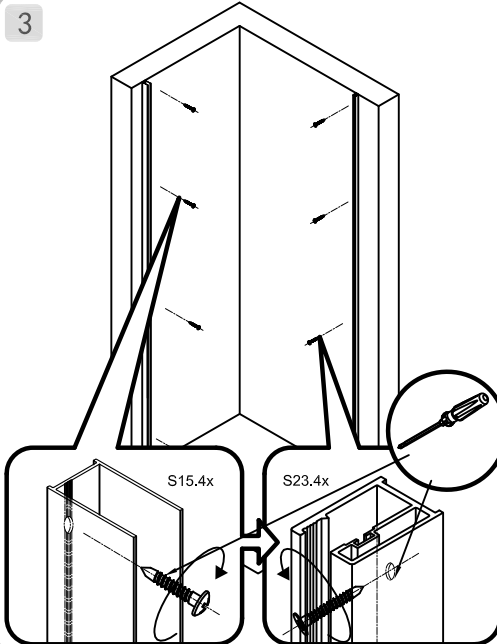
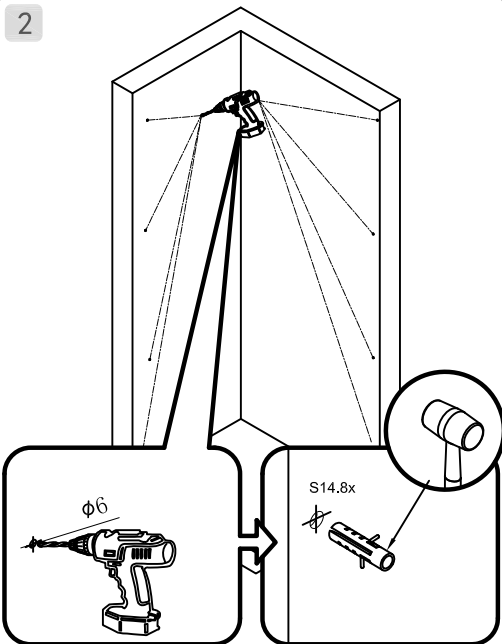
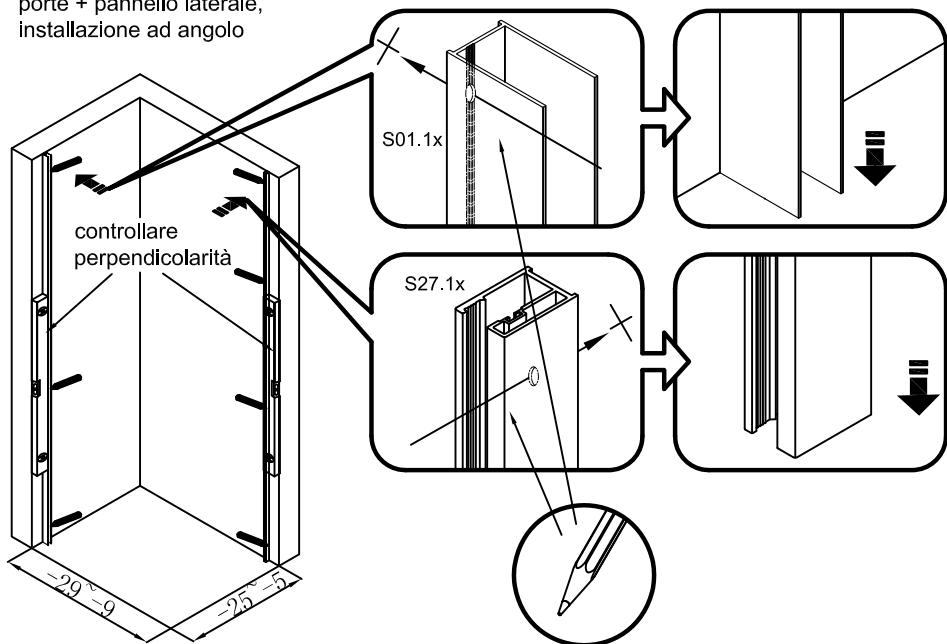


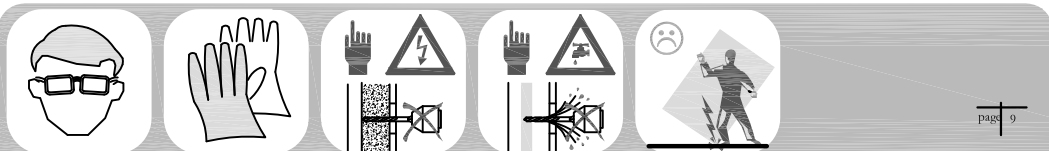




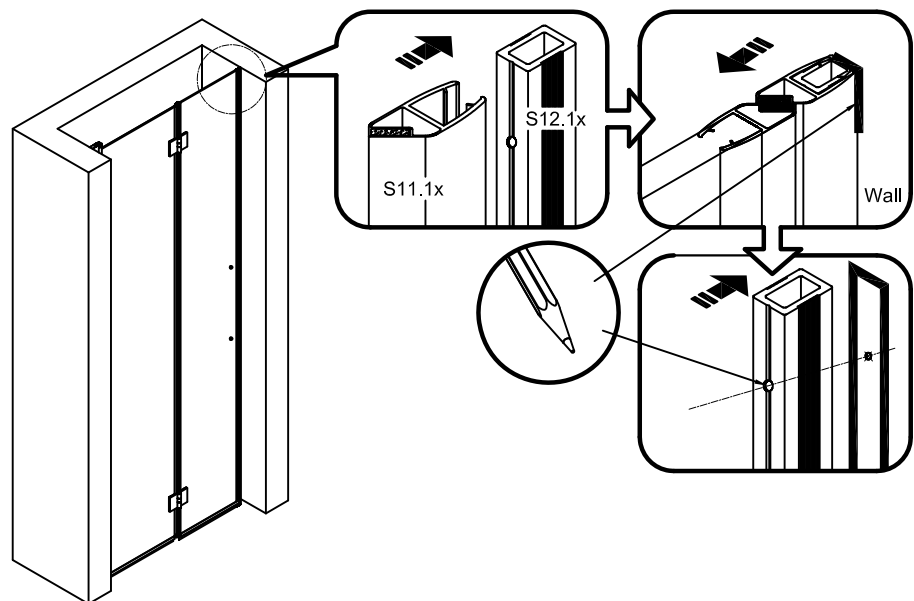


1 porte + pannello laterale,  
installazione ad angolo

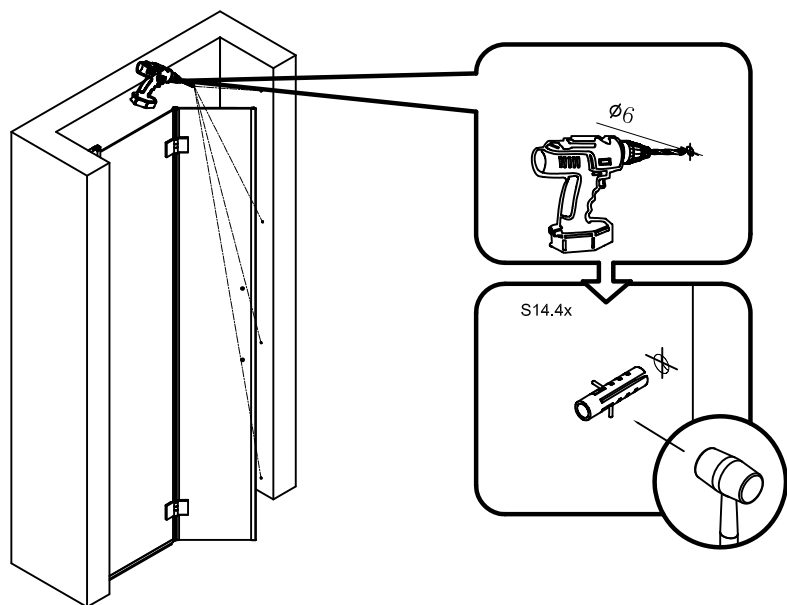




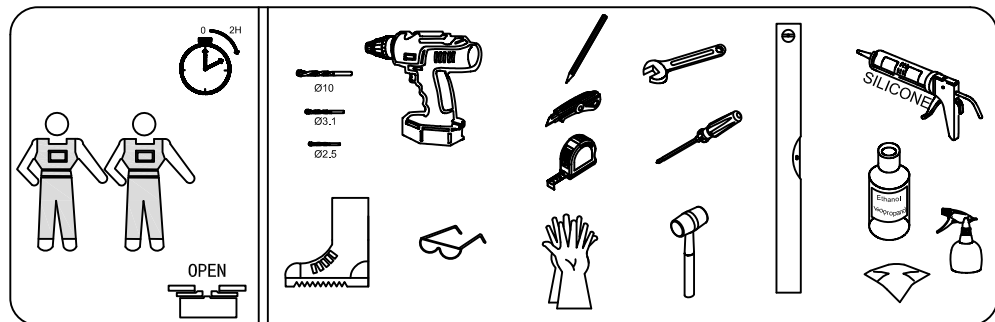
8

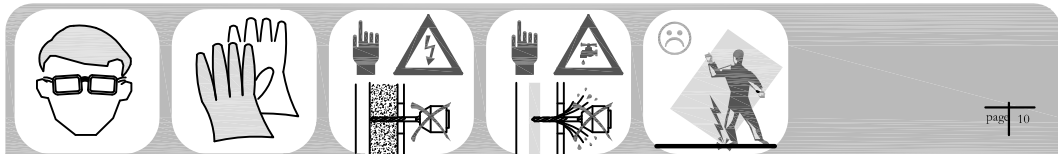
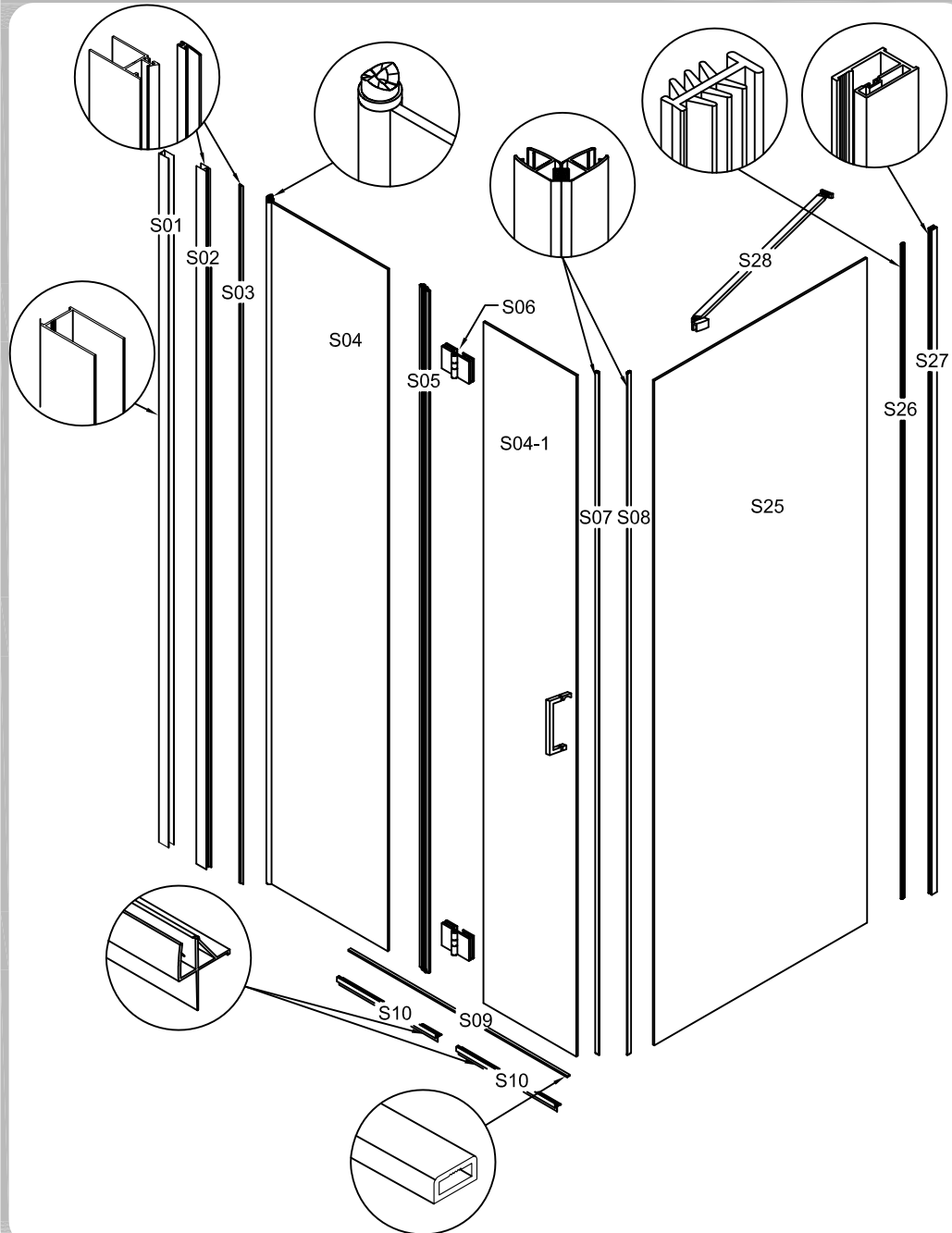
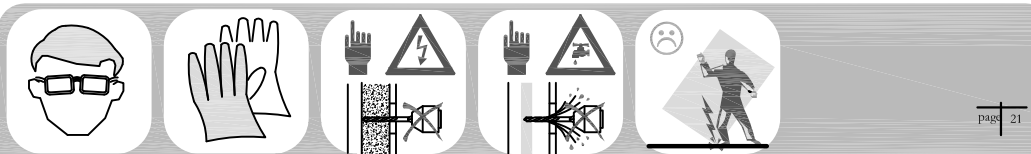


9

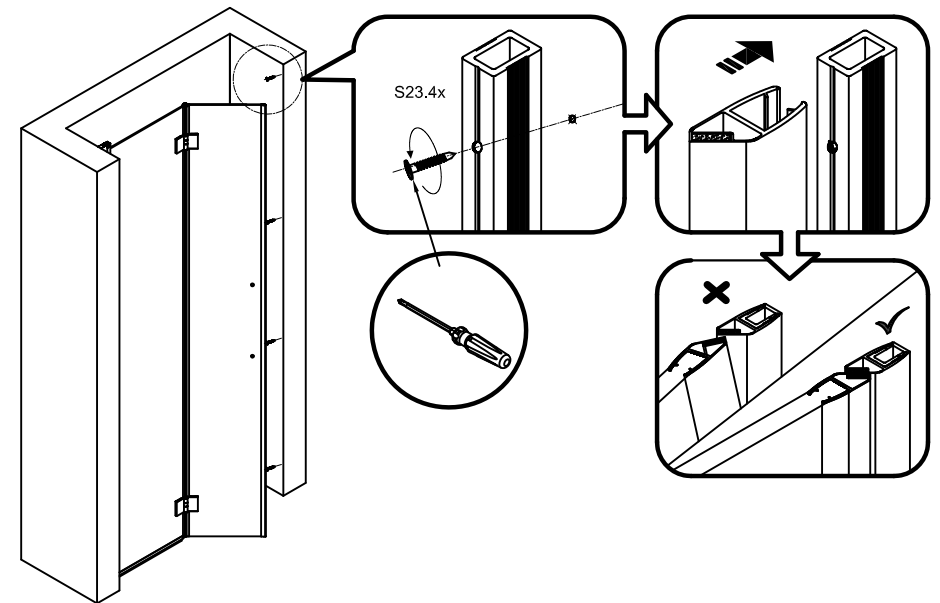


S13  3x	S14  8x	S15  4x	S16  1x	S17  1x
S18  1x	S19  1x	S20  1x	S21  1x	S22  6x
S23  4x	S29  1x	S30  1x		

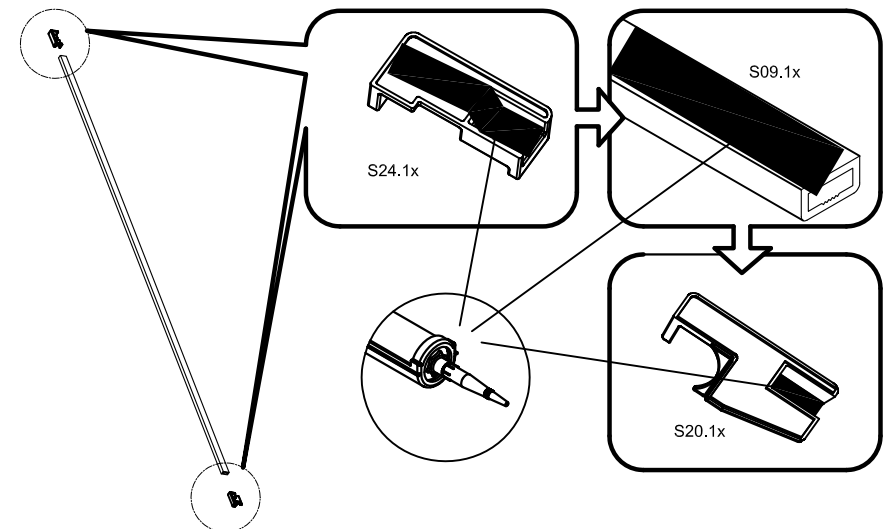


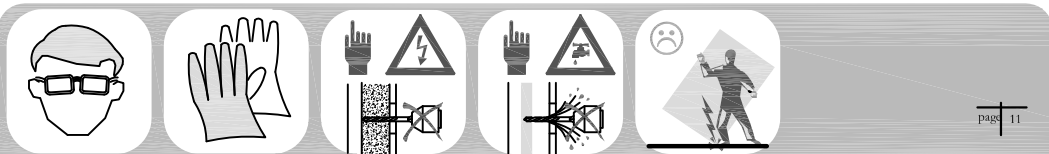


10

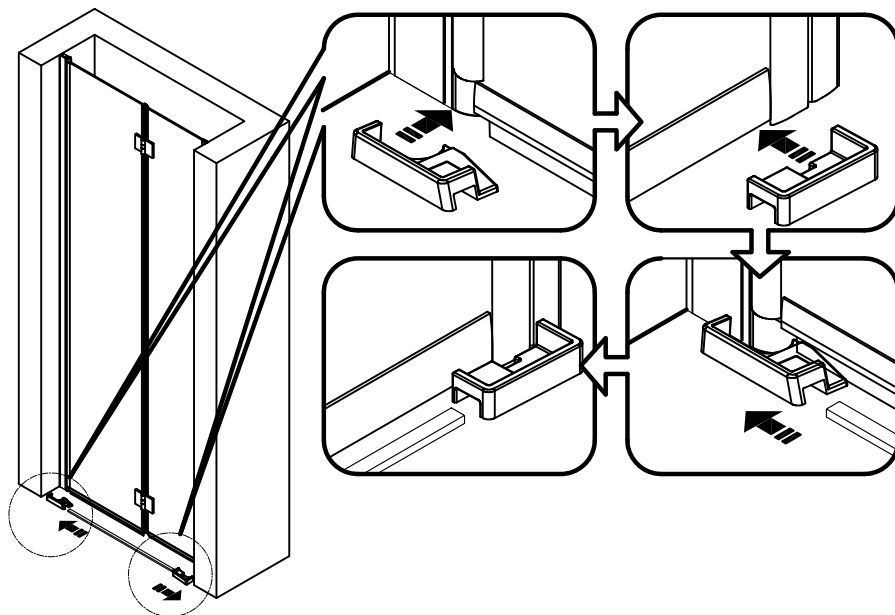


11

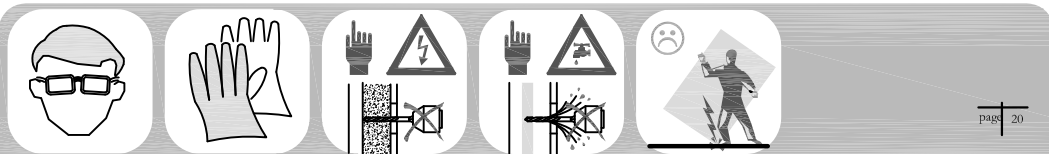
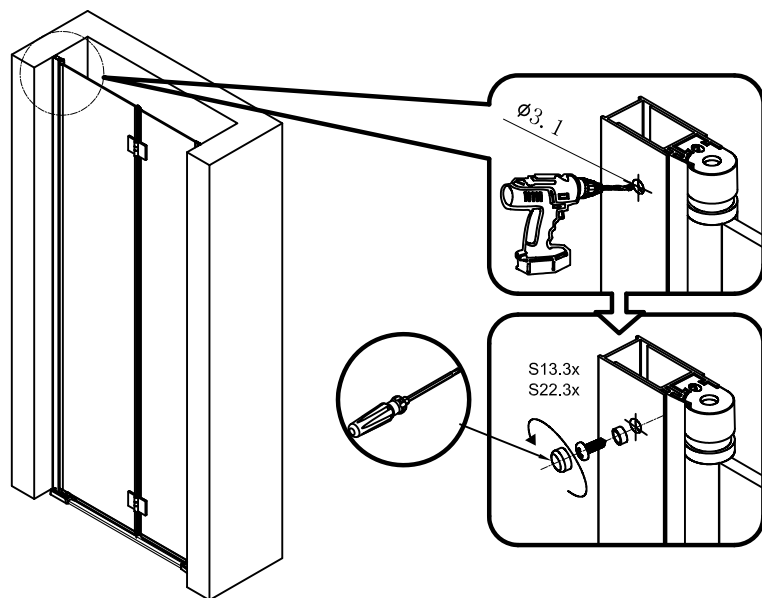




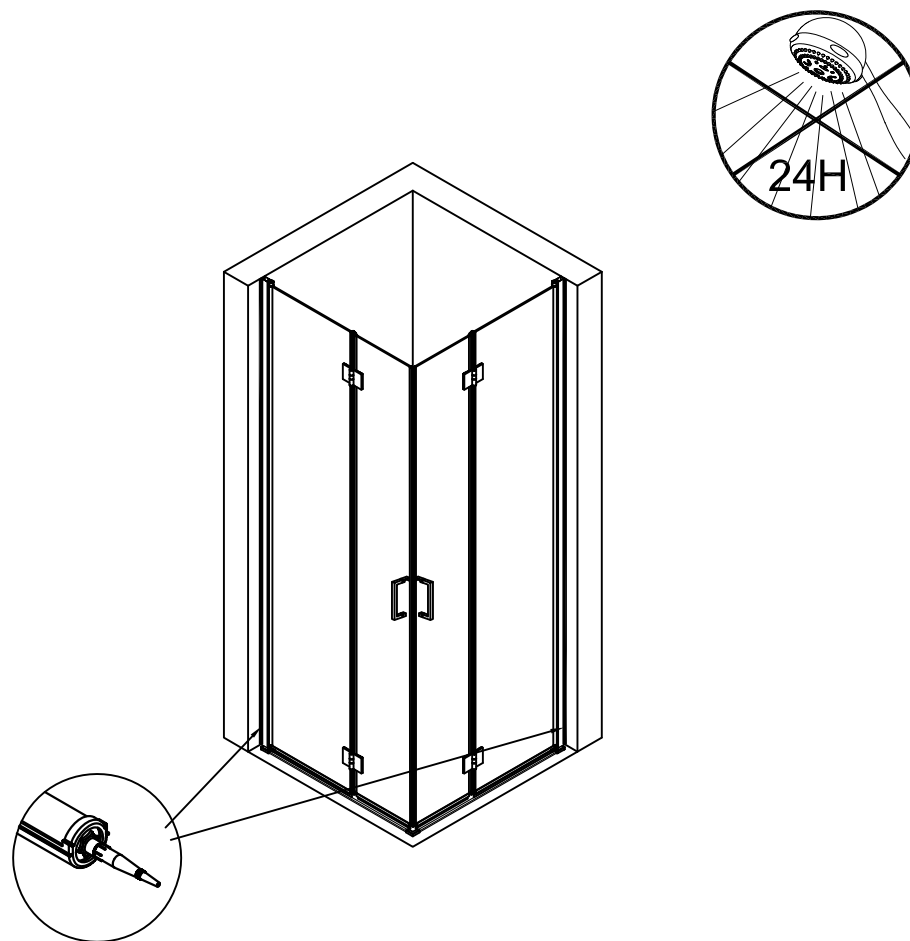
12

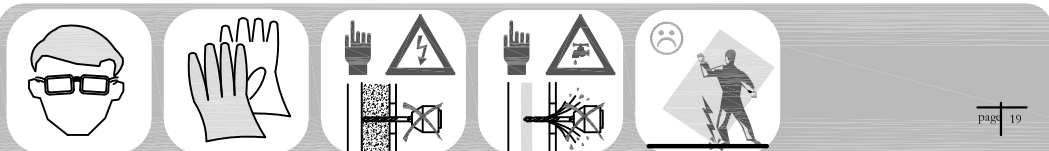


13

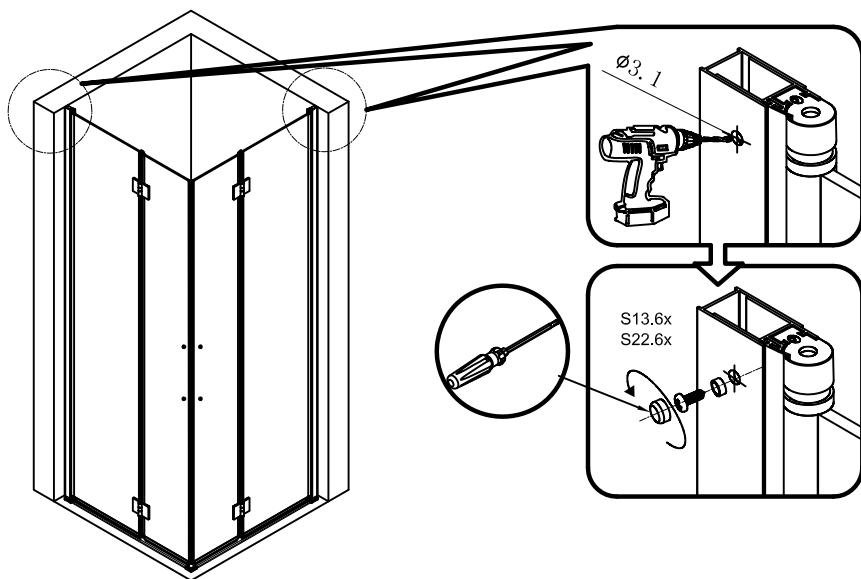


13

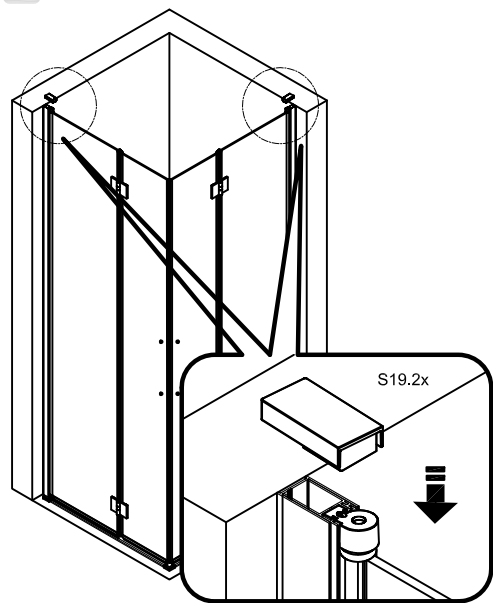




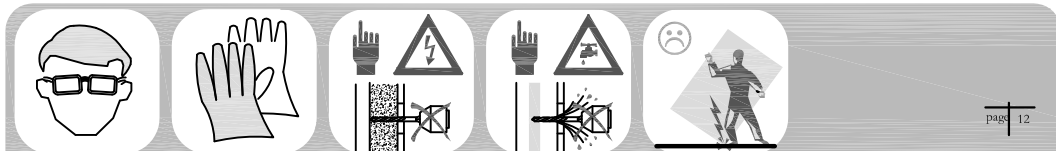
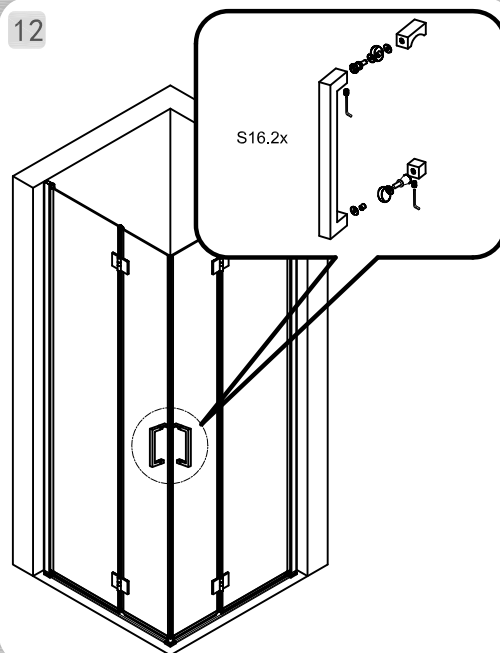
10



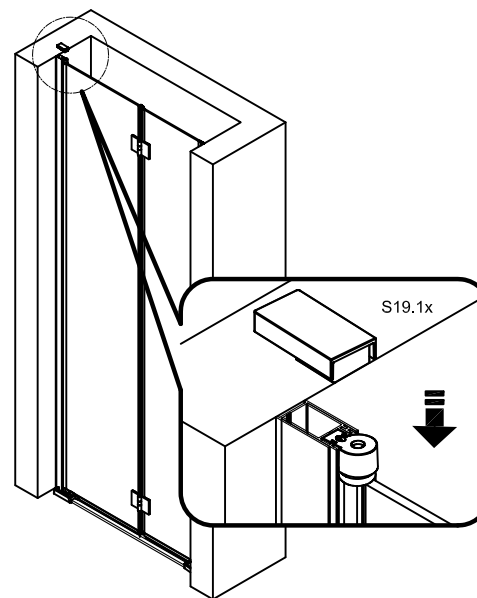
11



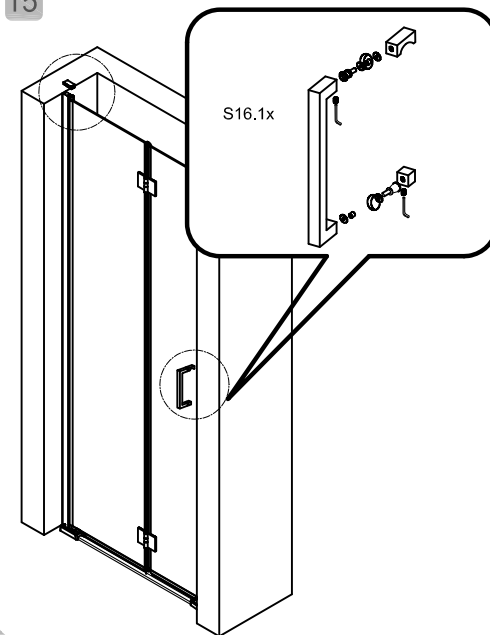
12



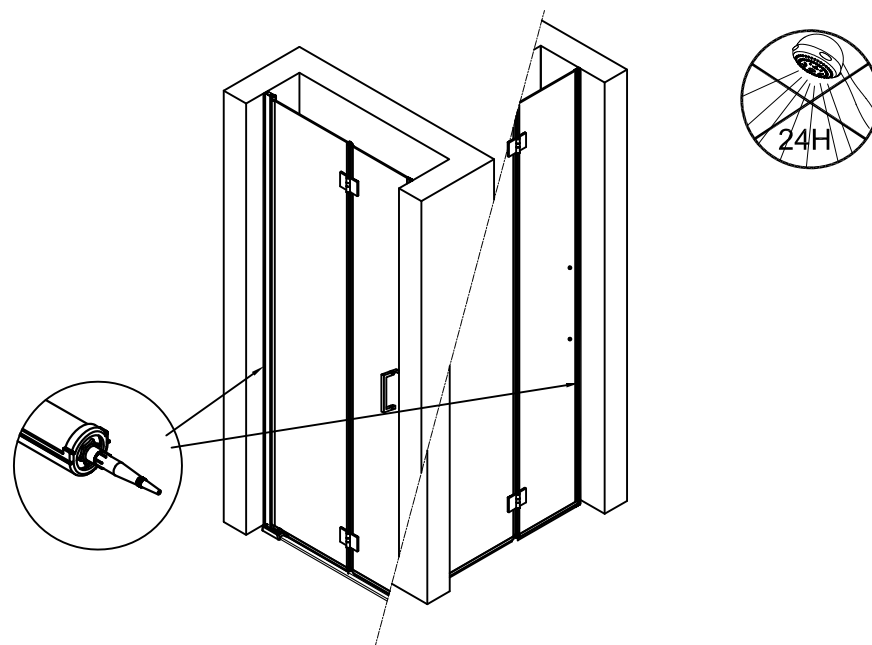
14

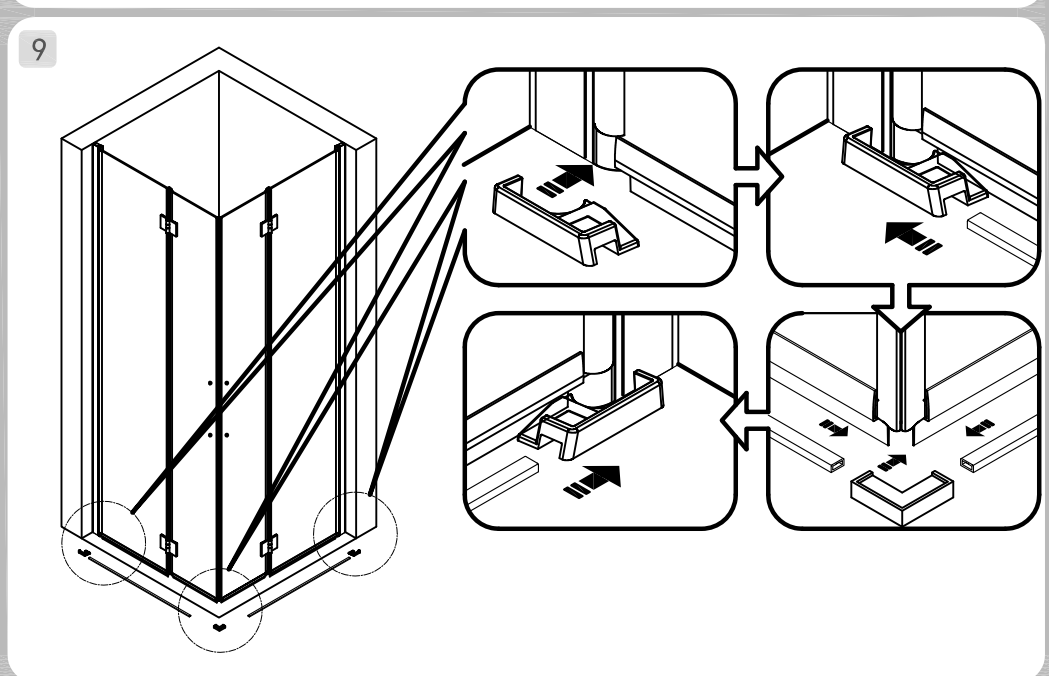
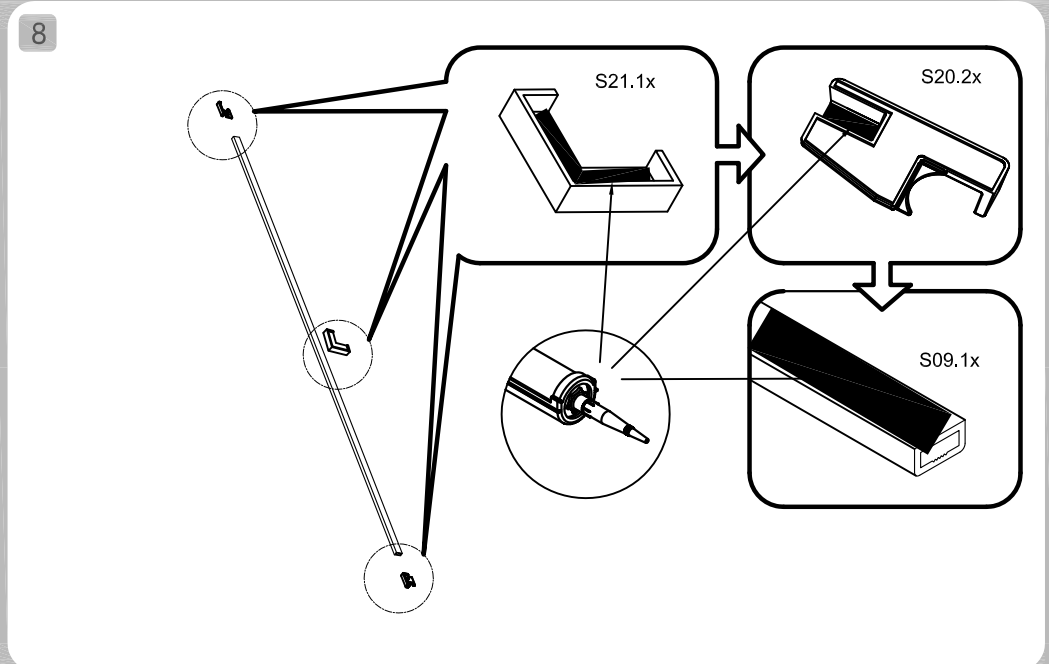
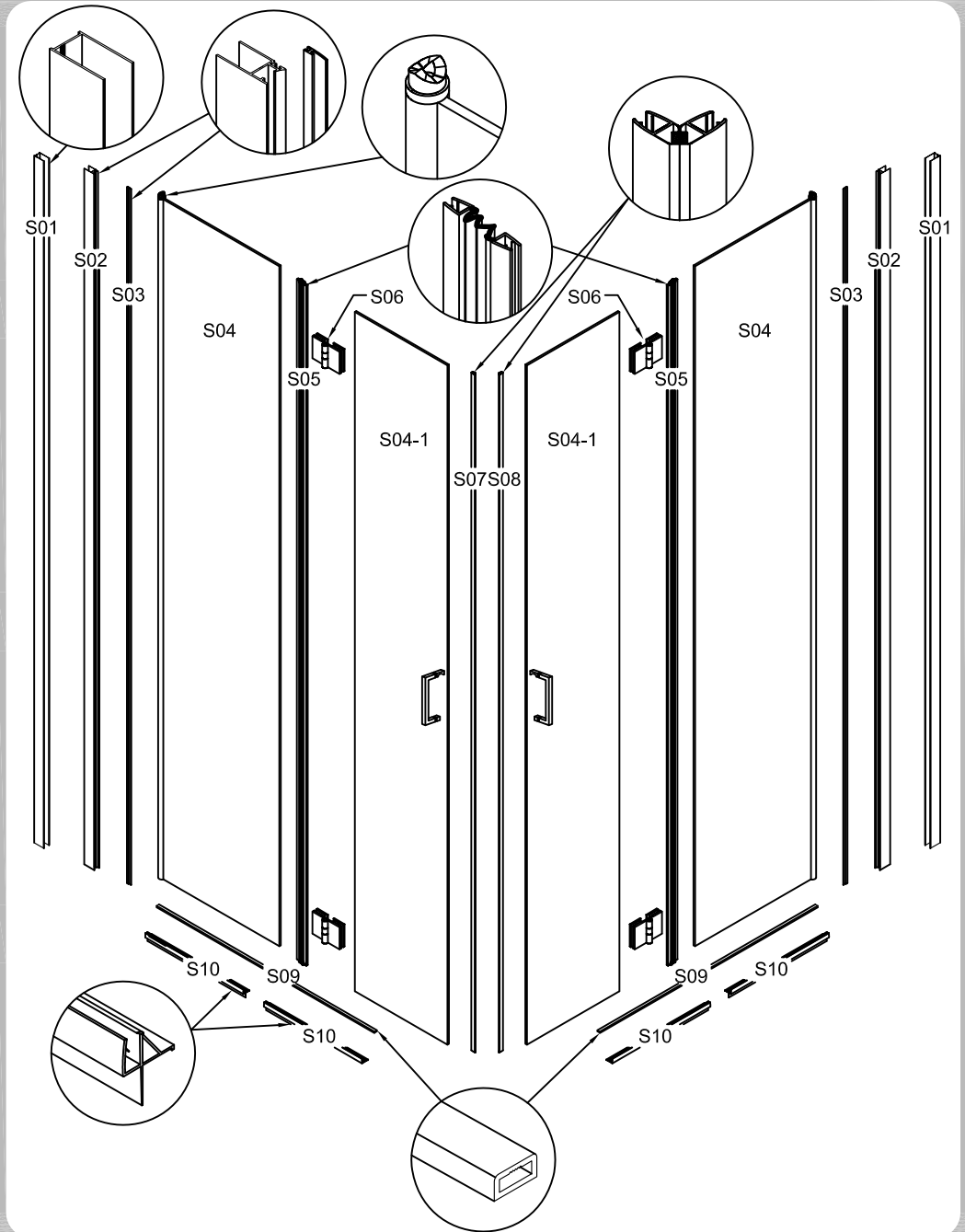
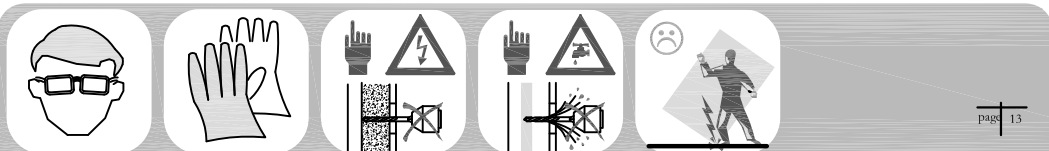


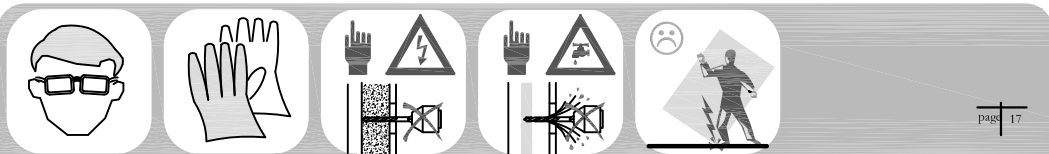
15



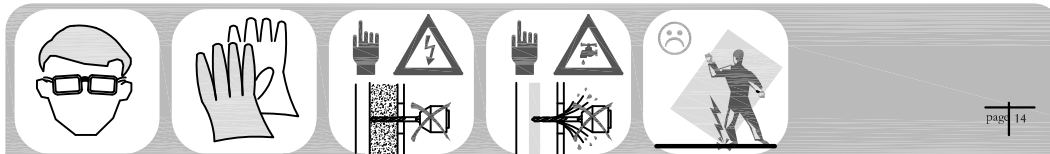
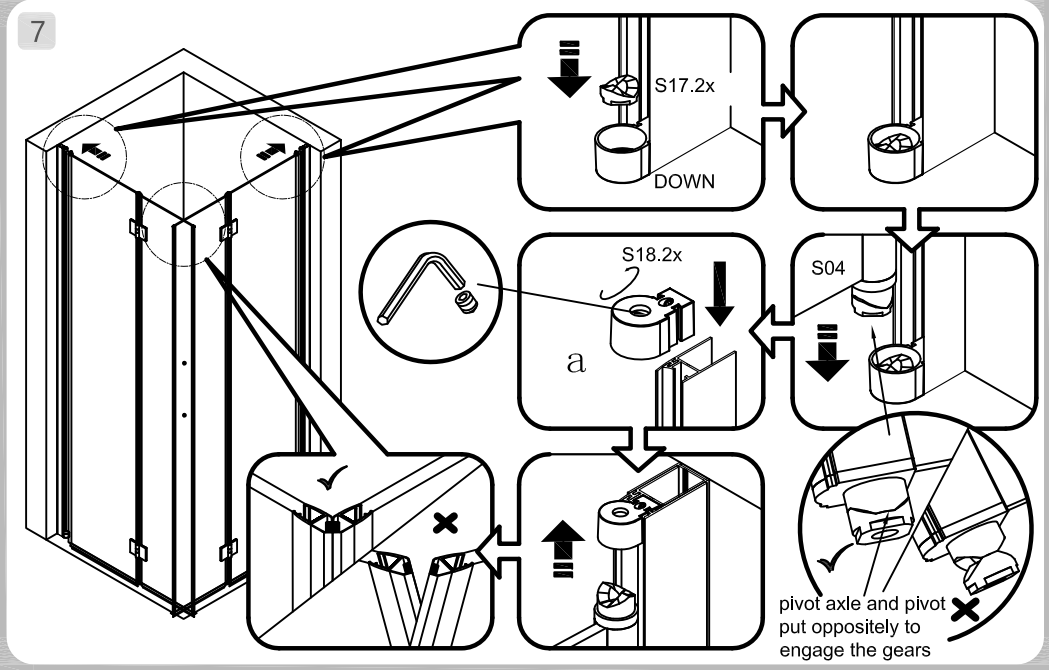
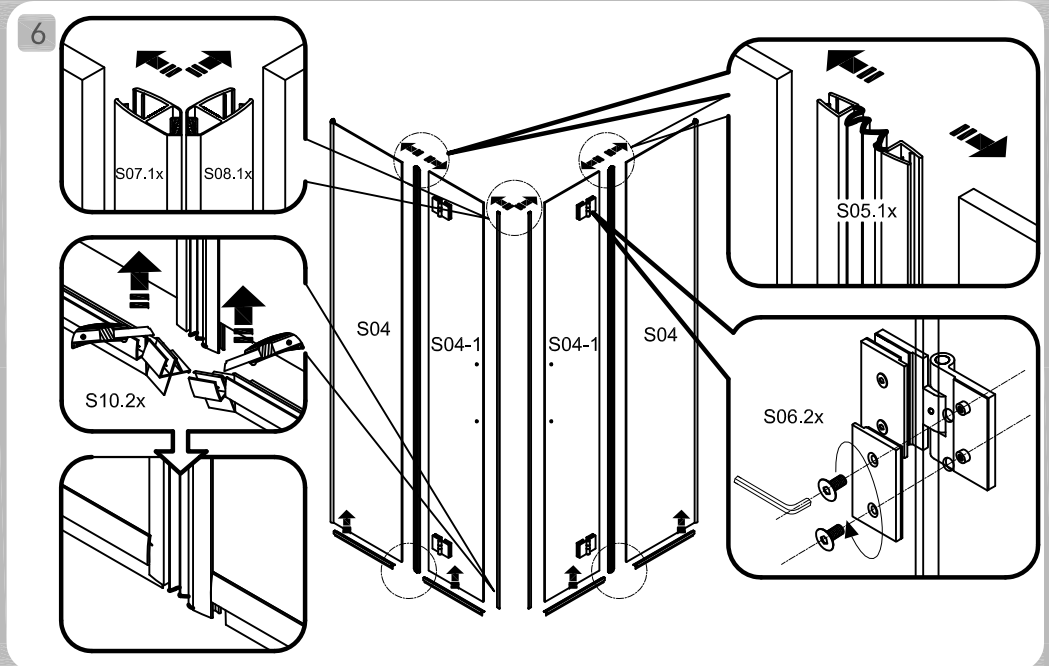
16





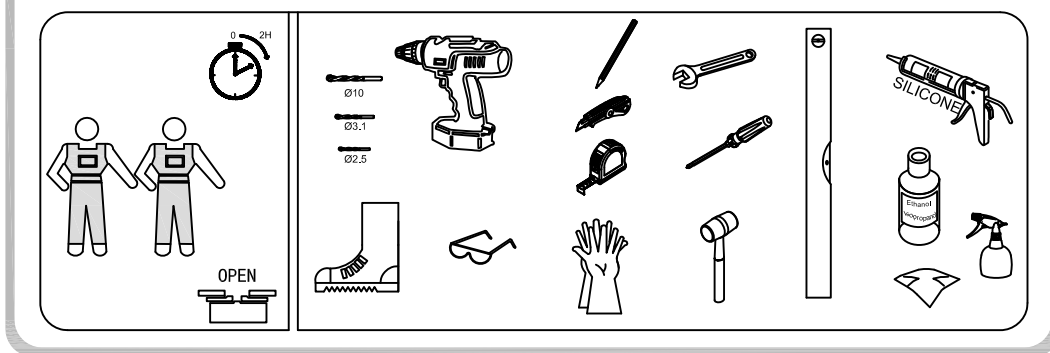


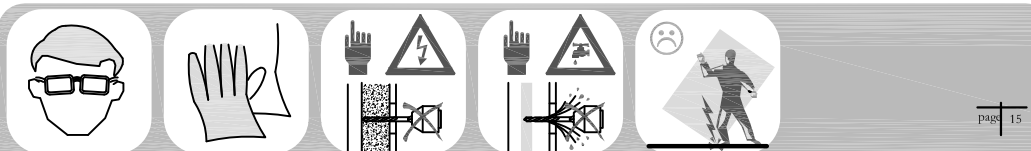
page 17



page 14

S13 ST4 10 6x	S14 8x	S15 ST4 30 8x	S16 2x	S17 2x
S18 a b 2x	S19 2x	S20 PPL748-A PPL747-A 2x 1x 1x	S21 2x	S22 6x





# 1 Due porte, installazione ad angolo

