

Colour light system EMOLUX

LED-based colour light unit with the colour spectre white, red, yellow, green and blue.

Simple installation and easy servicing.

Flickerfree, seamless colour transitions.

Very intensive, rich colours.

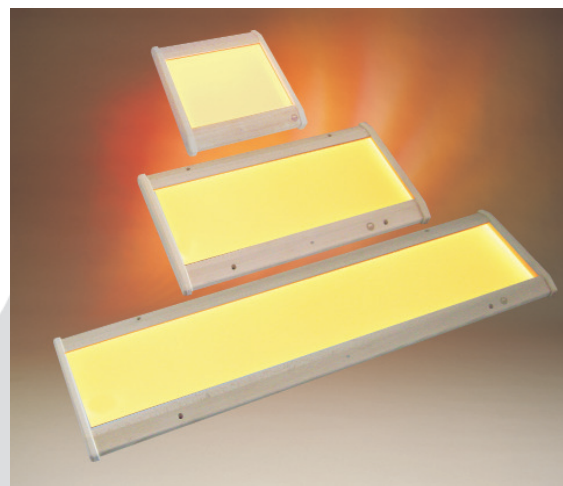
Compact and flat – very low height.

Control with a wireless infrared remote control unit.

Designed for installation on flat surfaces such as a cabin ceiling or walls.

Safety glass for optimal light dispersion and even colour distribution

Delivery includes power adaptor with 4m cable, EU type plug

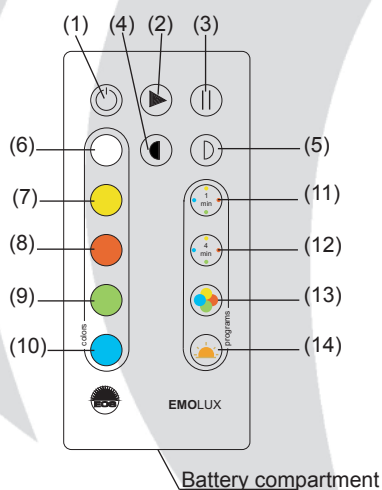


CE MADE IN GERMANY

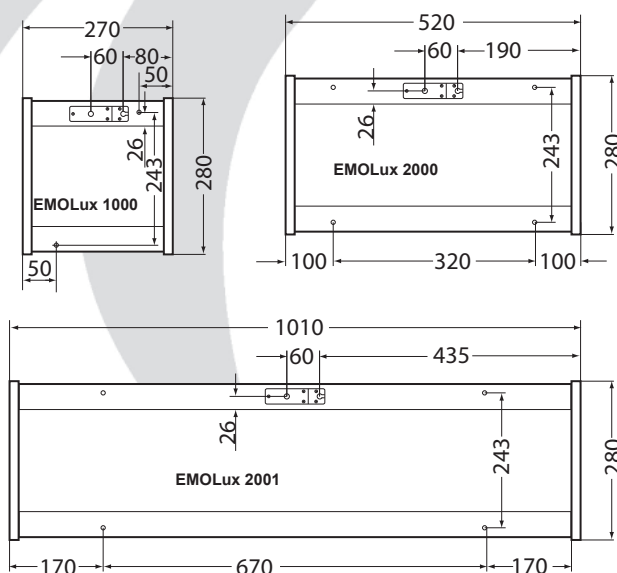
Remote control unit

Functions:

- (1) On / offs
- (2) Resume program (run cycle)
- (3) Pause program (freeze colour)
- (4) Decrease light intensity (dimming)
- (5) Increase light intensity
- (6) Continuous white light
- (7) Continuous yellow light
- (8) Continuous red light
- (9) Continuous green light
- (10) Continuous blue light
- (11) Run colour sequence (cycle) red- yellow-green-blue at 1 minute per colour rate
- (12) Run colour sequence (cycle) red- yellow-green-blue at 4 minute per colour rate
- (13) Continuous colour rotation cycle red-yellow-green-blue
- (14) Sun dawn program



Dimensions



Specifications:

	EMOLux 1000	EMOLux 2000	EMOLux 2001
Item no.	94.5370	94.5308	94.5307
Dimensions LWD app.	270 x 280 x 35 mm	520 x 280 x 35 mm	1010 x 280 x 35 mm
Power supply :	12V 1,8 A	12V 1,8 A	12V 3,6 A
Power rating	10,8 W	21,6 W	43,2 W

Technical changes reserved